



fw22


MANTERO | 1902



rural escape

# intro

In her debut novel - *Brick Lane* (written sometime in the early 2000s), Monica Ali (an English-Bengali writer) wrote about the protagonist's sense of estrangement and lack of cultural roots when relocated to London against her will. The heroine measured the distance from her beloved sister, who remained in Bangladesh, using the seven seas and 13 rivers she had to cross to see each other.



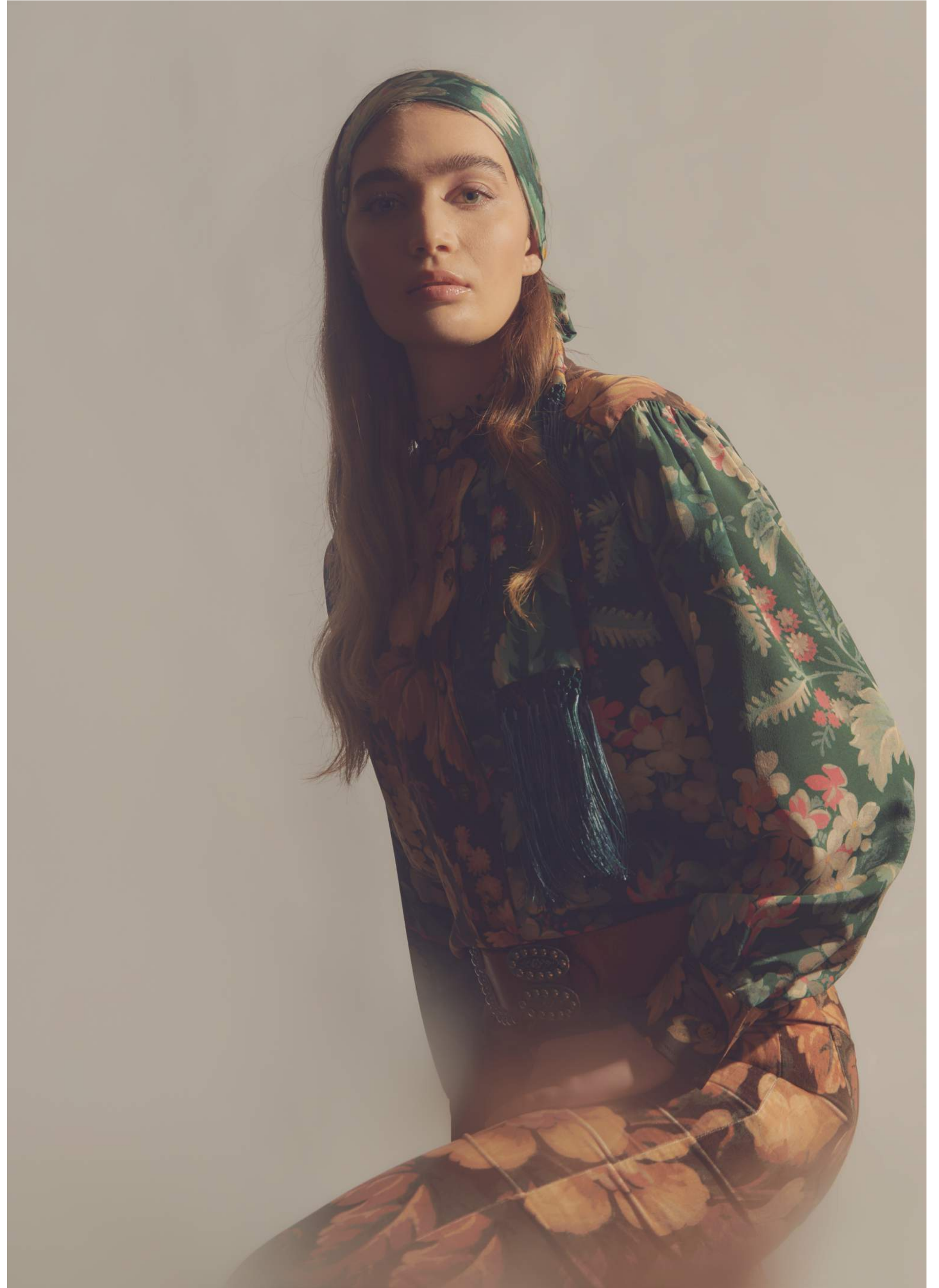
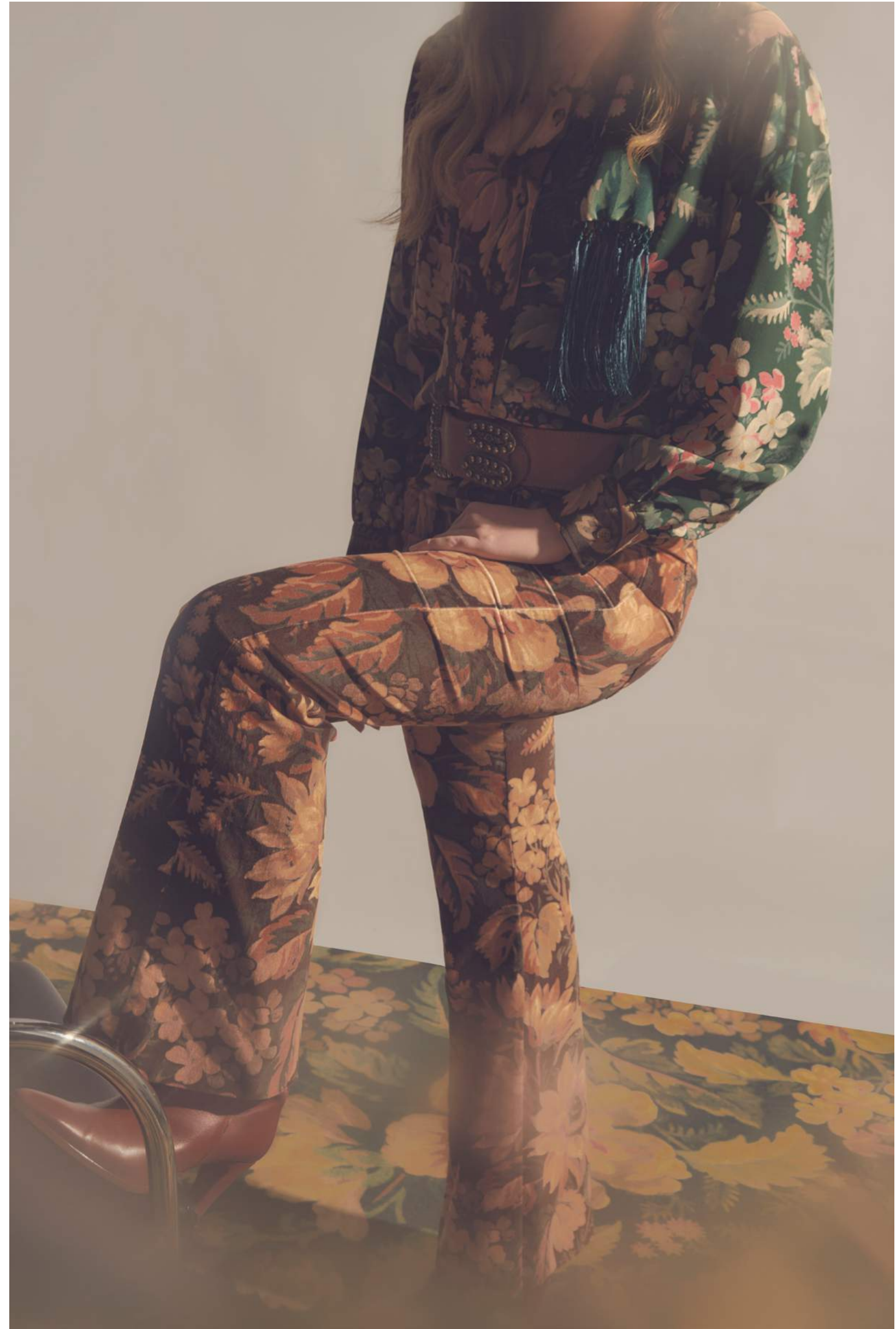
Mantero FW22 collection's message is the opposite. It is extremely cheerful and makes distances, differences, and eclectic traditions its strength. Strangeness develops as originality and becomes value, research, curiosity, rooted in the study of **cultural nomadism**, which is made effective and easy and is never banal. An **intense geographical and emotional landscape**, lost in time and space, where that space is unknown distant and transformed, is evoked. **Traditions, popular stories, and symbols** have been shared, transformed and **respectfully re-interpreted**.

The desire to return to the land permeates the choice of colours, fabrics, and many subjects. The designs are **rich, detailed, and magnificent**. The fabrics alternate shiny effects, such as **silk twill**, with matt like **velvet** or **Resilk**. Details, such as **embroideries, knotted fringes, feathers, tassels and full-bodied jacquard** fabrics make the difference, and demonstrate tailoring and obsessive care for the product that enrich the silhouettes full of “**arty country**” references.



looks

















# collection plan

# top

16

long sleeves top  
essential shirt  
sail neck shirt  
stand up collar shirt

# resses

12

short dress  
midi chemisier  
long buttoned dress

# bottoms

7

wrap skirt  
flare velvet jeans

# jackets

6

single-breasted blazer  
jacquard duster coat

# overview | prints

## TRANSILVANIA



A 1980s design that belongs to the Sergio Bini collection. A manual Ramage abandons excessive romanticism or realistic pictorial hints to recreate interesting and multi-ethnic atmospheres far from the most classic mannerisms.

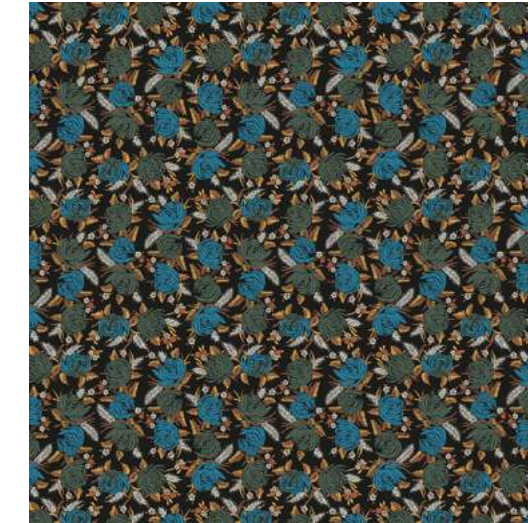


## AUBUSSON

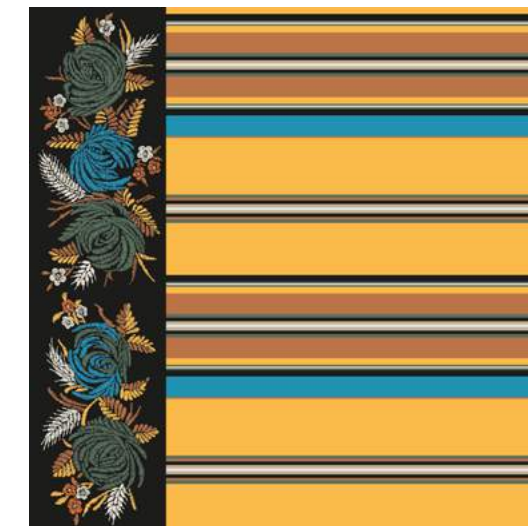


Based on a French tapestry hand-drawing from 1894, the floral motif envelops the viewer in a luxuriant voluptuousness and a background depth where the flowers emerge triumphantly.

## ESOTISMI



Reinterpretation of a 13-colour Mantero scarf, dating back to winter 82/83. The combination of stripes and floral borders with an embroidered effect creates interesting trompe l'oeil effects.



## FUNNY THISTLE



Geometric motif with de-structured effect, dating from the 1980s.

# overview | prints

PATCHY  
MATCHY



All-over design made from a hand-drawn patchwork collage of Mantero scarves of different sizes and eras.

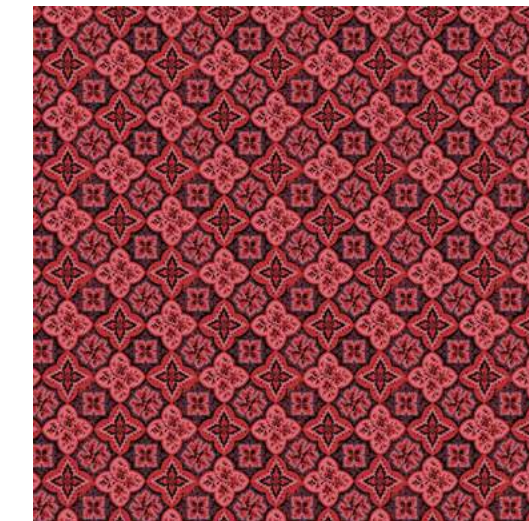
MULHOUSE



COLMAR

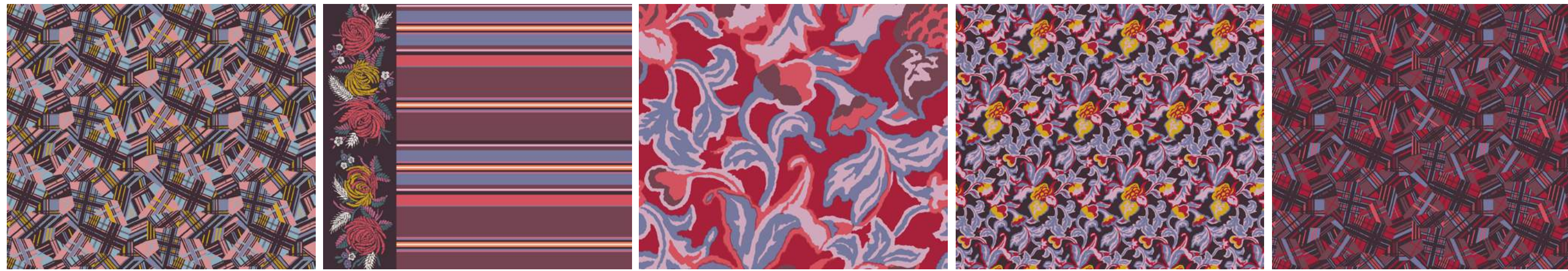


KOUGLOF

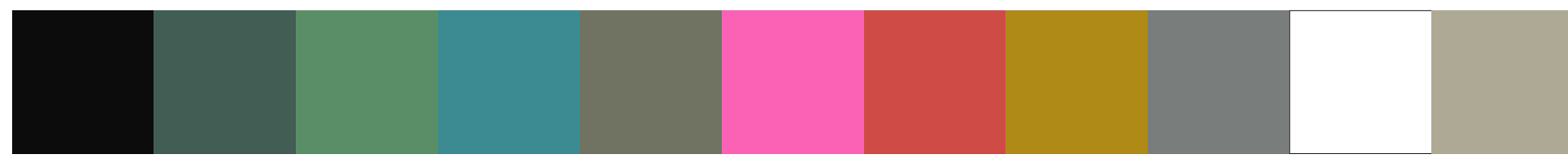


These motifs are hand-drawn from the early 19th century and are taken from presumably French or rather Alsatian collections. This was when many French textile companies developed several motifs for fabric printing with the most varied inspirations - Turkish (the typical red gauche), Indian, Russian or Balkan motifs, and the distinctive Provençal floral borders. The rich loom motifs typical of the most valuable tapestries are used in print to create an extremely sophisticated effect.





volcano



flamboyant forest



warm contrasts

# overview | fabrics

## **Silk twill 14 MM\***

With a special finishing that makes the fabric opaque and gives a silk vintage effect.

- \_ Clothing: basic blouse, sail collar blouse, short dress, chemisier
- \_ Classic accessories: classic scarves in various sizes and accessories such as the choker and fringed bandeau

## **Silk twill 21 MM\***

With a special finishing that makes the fabric more opaque and gives a silk vintage effect.

- \_ Classic accessory: scarves in various sizes

## **Crêpe de chine 14 MM\***

With a special finishing that makes the fabric more opaque and gives a silk vintage effect.

- \_ Clothing: essential shirt
- \_ Accessories: various sizes of foulard, padded scarf

## **Crêpe de chine 16 MM\***

With a vintage effect finish (only for accessories).

- \_ Clothing: pleated skirt, long asymmetrical dress and asymmetrical blouse
- \_ Accessories: embroidered stole

## **Resilk®**

The “Gauze” is made with traditional silk yarn and Resilk with a 48-52% silk percentage.

- \_ Classic accessory: scarves in various sizes

## **Cotton Velvet**

100% cotton shaved velvet.

- \_ Clothing: complete jacket - trousers
- \_ Accessory: padded and doubled scarf with crêpe silk

\*(momme - silk density unit of measurement)

# overview | fabrics

## **Jacquard 1/2**

We have created a jacquard fabric coat (approx. 680 g/ml). Its warp is made of recycled polyester, developing quality and sustainability at the heart of our products. The pure wool yarn in the weft is a two-colour yarn, and three different colours have been used in the fabric weaving to achieve the rich multi-colour patterns. The fabric is gauzed, which gives the wool a softer, warmer feel.

\_ Clothing: duster coat

## **Jacquard 2/2**

100% wool floral jacquard with fringes. Unique warp yarn alternating two yarns in different colours work separately with the weft yarns to obtain a richer and more multicoloured floral pattern. The fringes are obtained by twisting several warp threads, appearing as a soft string that is not applied but incorporated into the fabric.

\_ Accessory: maxi scarf with fringes, stole/poncho with fringes and patch pockets

## **Jacquard Crêpe Satin**

Crêpe satin jacquard with alternating patterns (polka dots and stripes) and shiny/matt effects.

\_ Classic accessory: scarves in various sizes



thanks