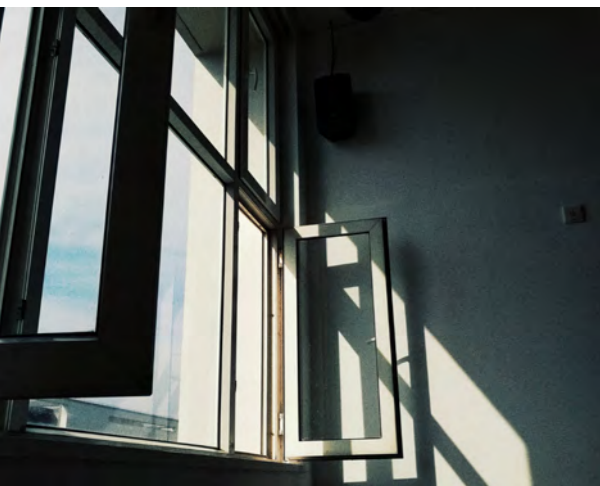


MANTERO | 1902
SPRING/SUMMER 2022



IN & OUT

The collection comes to life by **observing everything that has changed** around and within us. We have intensely experienced **domestic spaces** and redefined time and space. In this new time, the objects in our homes - which were once looked down upon or taken for granted - have become **subtle companions in our daily lives**, revealing their functions, beauty, and practicality, breaking down and reassembling themselves around us. **We travelled to faraway imaginary places in dreamlike scenarios**. We were immersing ourselves in a **surreal and enveloping nature**, swallowed up to recover our ancestral bond with the land.

These strong, all-encompassing sensations translated into a balance where before, during and after coexist. The **geometric**, essential, almost **architectural prints** meet **evocative, naïve botanical motifs** where giant volumes alternate with micro proportions, with **decisive, clean, full-colour strokes**.

The colour research pursues the same objective as the selected prints: to show the nuances of this new volume using a **climax**. The **natural palette** (every hint of warm earth tone is deliberate) is **counterbalanced by sunny, energetic, cheerful colours**. And there is the sober reassurance of a more conventional palette where blues and reds emerge from light backgrounds.

The garments are modular. On their own, they are colourful and sophisticated, while combined, they become a precise statement, a manifesto. The lines are simple, clean, concise, with a masculine and feminine touch; the excessively bon ton details have been abandoned, searching for **a new formal rigour**. The tailored details reveal the **luxury of simplicity**. **Soft volumes** follow our new rhythm that alternates between the **search for comfort and elegance**.

Elegant, compact bags become easy with colourful shoulder straps. The Brand's most iconic accessories - **stoles and scarves** - are **enriched with embellishments** and the complementary colours of **double prints**. There are the "specials" - the hallmarks of a collection focused on details. There are **bandanas and headbands** to dress the head. Then, there are **the cape, maxi shawl, and double ascot** to add originality to summer outfits.

ICONS

ARCHIVIO N°15 - ERBARIO

24,000-

90x90 - 100% SILK TWILL - HAND-ROLLED HEM
 Model: 01041 - Article: 2768 - Style: JL297

A portrait of a garden in bloom, in which hyacinths, narcissus, iris, tulips, lilies and anemones mix in a floral composition that is fresh and joyful. The design is made precious by the Latin names of the flowers. Colours are even richer and more vibrant thanks to the silk twill's sheen.



Colour: 1
 Colour description: BEIGE



Colour: 2
 Colour description: ORANGE



Colour: 3
 Colour description: CREAM



Colour: 4
 Colour description: IVORY

ICONS

ARCHIVIO N°39 - MAMAN

90x90 - 100% SILK TWILL - HAND-ROLLED HEM
 Model: 01041 - Article: 2768 - Style: JL834

24,000-

A romantic and delicate bouquet that seems to take life on the silk, with an elegant and pulsating movement. The design intensifies in the centre, almost appearing to highlight the significance of its deepest essence. A floral print that fascinates, striking a perfect balance between romanticism and freshness.



Colour: 9
 Colour description: BLUE



Colour: 10
 Colour description: LILAC



Colour: 11
 Colour description: FUCHSIA



Colour: 12
 Colour description: IVORY

ICONS

ARCHIVIO N°50 - BOUQUET

90x90 - 100% SILK TWILL - HAND-ROLLED HEM
 Model: 01041 - Article: 2768 - Style: JR594

24,000-

An authentic vintage design was taken from the first Mantero collections with floral patterns hand designed and processed by the polishers for a traditional print. Today the original motif is reinterpreted with new refined colours.



Colour: 12
 Colour description: JET BLACK



Colour: 13
 Colour description: LIGHT PINK



Colour: 14
 Colour description: FUCHSIA



Colour: 15
 Colour description: CREAM

ICONS

ARCHIVIO N°53 - VILLA BORGHESE

90x90 - 100% SILK TWILL - HAND-ROLLED HEM
 Model: 01041 - Article: 2768 - Style: JT517

24,000-

The pervasive passion for vintage décor aesthetics is captured in this simply "magnificent" scarf dated 1993 and originally printed with 13 screens. The flowers and multicoloured tassels create a refined but vibrant garland. The geometric border is reminiscent of bronze architectural elements for a striking result.



Colour: 5
 Colour description: IVORY



Colour: 6
 Colour description: PINK



Colour: 7
 Colour description: BLUE



Colour: 8
 Colour description: CREAM

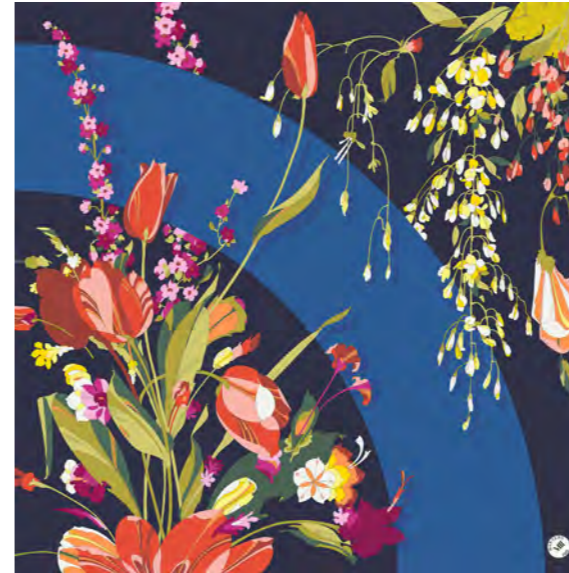
ICONS

ARCHIVIO N°54 - WISTERIA LANE

90x90 - 100% SILK TWILL - HAND-ROLLED HEM
 Model: 01041 - Article: 2768 - Style: JT846

24,000-

A pattern from the historic Mantero Collection, dated 1981. The wisteria ramage represents the feminine and floral main element of the composition, while the circle section in full colour is the masculine side element: decisive and determined, it would make no sense without her, but it makes her beauty shine. All the silk twill scarf flowers are designed with a characteristic subtle outline.



Colour: 1
 Colour description: DEEP BLUE



Colour: 2
 Colour description: LIGHT BLUE



Colour: 3
 Colour description: FUCHSIA



Colour: 4
 Colour description: NUDE

ICONS - REVERSE PRINTING
ARCHIVIO N°12 - DALIA

90x90 - 100% SILK TWILL - HAND-ROLLED HEM
 Model: 01192 - Article: 23916 - Style: BK044

39,000-

The Dahlia is the queen of our floral prints. It comes from an original scarf of 1978 printed with 30 colors. Individual and finely hand-drawn petals and colours are enhanced by the design's richness and chromatic ranges. The background is enriched by a calligraphic inscription which gives the carré a timeless classic style. With a reverse print, the silk twill scarf combines two garments in one: the front and back come in two different colours.



Colour: 1
 Colour description: LIGHT BLUE / LILAC



Colour: 2
 Colour description: BLACK / FUCHSIA



Colour: 3
 Colour description: GREEN / YELLOW

この2品番は、
 驚愕のリバーシブル
 プリントです。

ICONS - REVERSE PRINTING
ARCHIVIO N°55 - LA CAMPAGNA

90x90 - 100% SILK TWILL - HAND-ROLLED HEM
 Model: 01192 - Article: 23916 - Style: BK038

39,000-

We have missed our wonderful countryside and how lovely it was to get there again. The archival motif - where the elements are deliberately out of proportion - offers a close, immersive view and reveals tender, almost fairy-tale-like animal presences. With a reverse print, the silk twill scarf combines two garments in one: the front and back come in two different colours.



Colour: 1
 Colour description: TURQUOISE / YELLOW



Colour: 2
 Colour description: LIGHT BLUE / LILAC



Colour: 3
 Colour description: DEEP BLUE / FUCHSIA

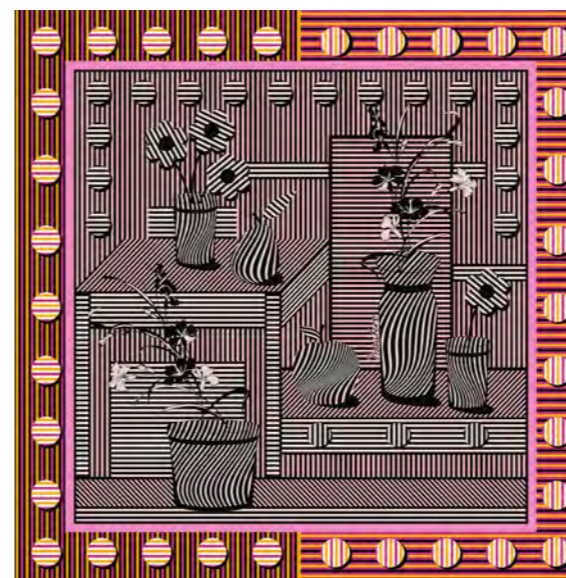
ACCESSORIES

CONVERSATIONAL OPTIC

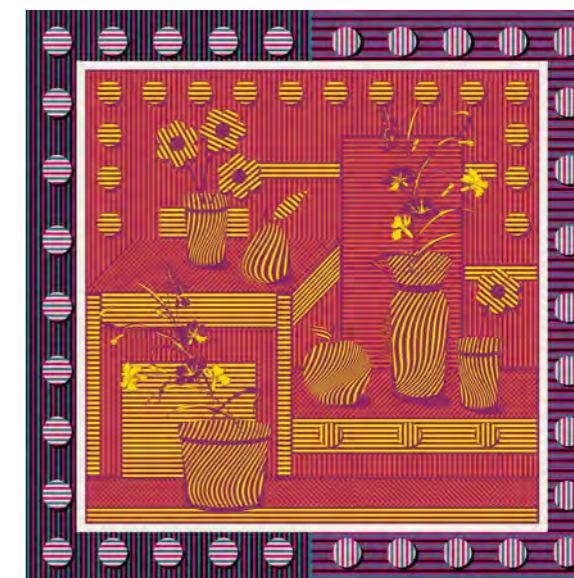
70x70 - 100% SILK CRÊPE DE CHINE - DEMI AJOUR-HEM
 Model: 00935 - Article: 2000 - Style: JT864

14,000-

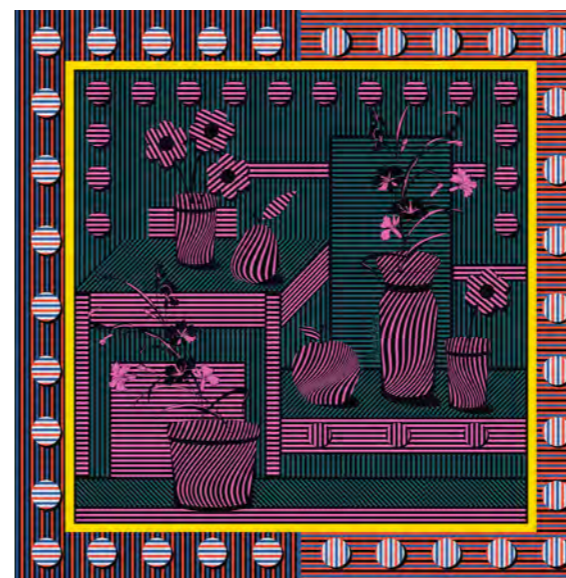
A refined graphic game distorts subtle stripes, creating "domestic" motifs - a vase, glasses - concise and clear, objects that surround us in everyday life, transformed into a refined pattern printed on crêpe de chine hemmed with a demi-ajour, embroidery effect.



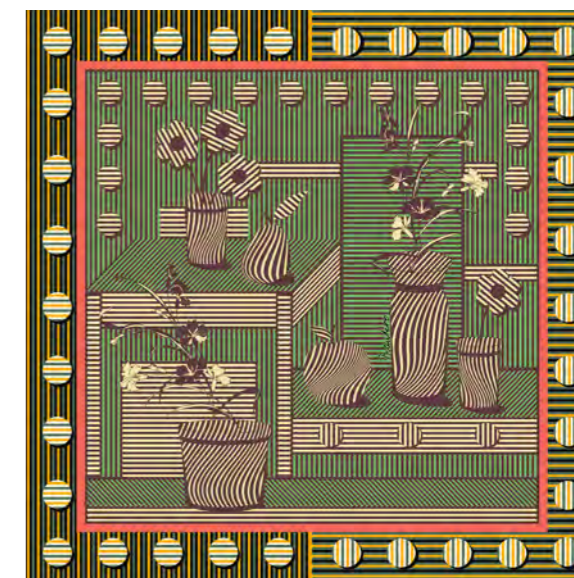
Colour: 1
 Colour description: PINK



Colour: 2
 Colour description: RED



Colour: 3
 Colour description: PETROL



Colour: 4
 Colour description: GREEN

ACCESSORIES
TURN AROUND

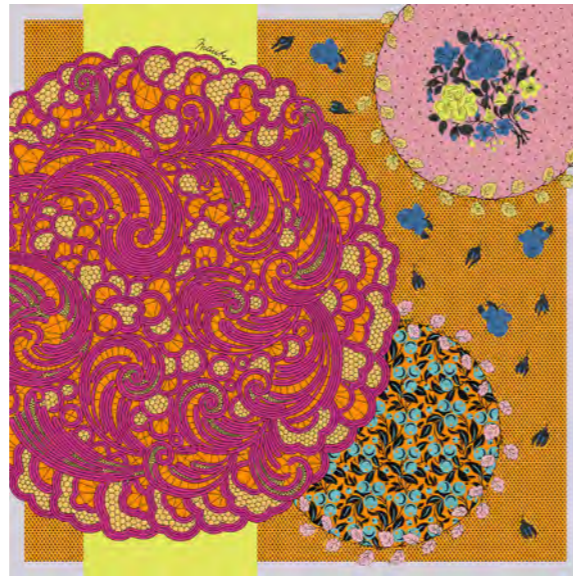
70x70 - 100% SILK TWILL - HAND-ROLLED HEM
Model: 00579 - Article: 7425 - Style: JT862

14,000-

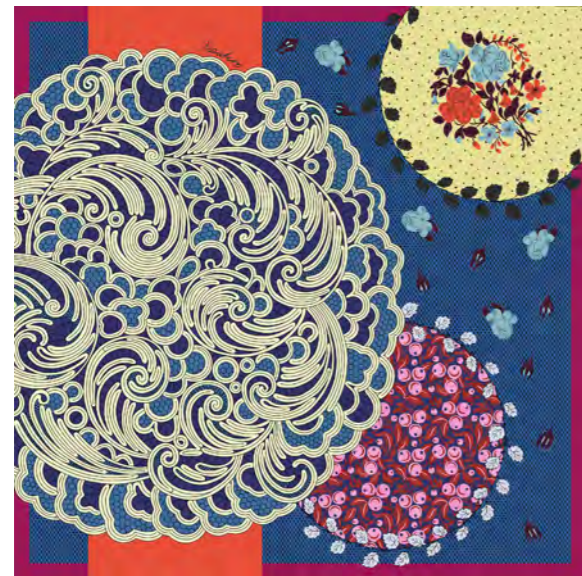
Delicacy, precision, details with motifs inspired by lace, embroidery and romantic imprimés with a childlike style, dating to the early 1900s. 70 centimetres of grace, on soft, luminous twill with a delicate, refined traditional hand hemmed finish.



Colour: 1
Colour description: RED



Colour: 2
Colour description: YELLOW



Colour: 3
Colour description: BLUE



Colour: 4
Colour description: GREEN

ACCESSORIES
NAIF

70x70 - 100% SILK TWILL - HAND-ROLLED HEM
Model: 00579 - Article: 7425 - Style: JT863

14,000-

The 1990s were aesthetically enjoyable, sometimes excessive, certainly memorable and courageous. The pattern from the Avantgarde archive - a famous textile art design studio and pioneer of digital technology - immerses us in a cheerful, pop jungle whose colours - printed on twill - stand out beautifully.



Colour: 1
Colour description: BLUE



Colour: 2
Colour description: FUCHSIA



Colour: 3
Colour description: YELLOW



Colour: 4
Colour description: GREEN

**ACCESSORIES
SHAPES**

70x70 - 100% SILK TWILL - HAND-ROLLED HEM
Model: 00579 - Article: 26135 - Style: JT861

16,000-

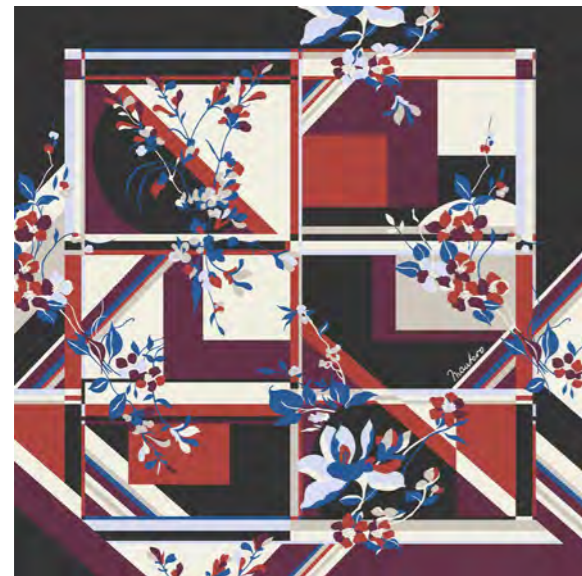
Building, deconstructing, reassembling: rigorous shapes - squares, triangles, stripes - play with leaf and flower motifs for a graphic theme - geometrics revisited - in many versions in the SS22 collection. Made of 21 mm twill and hand-hemmed, this scarf perfectly sums up the concept of balance between seemingly different worlds.



Colour: 1
Colour description: DEEP BLUE



Colour: 2
Colour description: FUCHSIA



Colour: 3
Colour description: BLACK



Colour: 4
Colour description: GREEN

**ACCESSORIES
SKY IS THE LIMIT**

70x70 - 100% SILK JACQUARD - HAND-ROLLED HEM
Model: 00579 - Article: 24857 - Style: JT101

16,000-

Looking at the sky through a frame of flowers that combine delicacy with bold graphics. Printed on exclusive textured crêpe satin, and with a hand-hemmed finish, the scarf features an unusual central motif that is intensely personal: a deliberately free space where to let your desires soar.



Colour: 1
Colour description: IVORY



Colour: 2
Colour description: PINK



Colour: 3
Colour description: BLACK



Colour: 4
Colour description: GREEN

ACCESSORIES
PIQUE-NIQUE

90x90 - 100% SILK CRÊPE DE CHINE - DEMI AJOUR-HEM
Model: 00857 - Article: 2000 - Style: JT894

25,000-

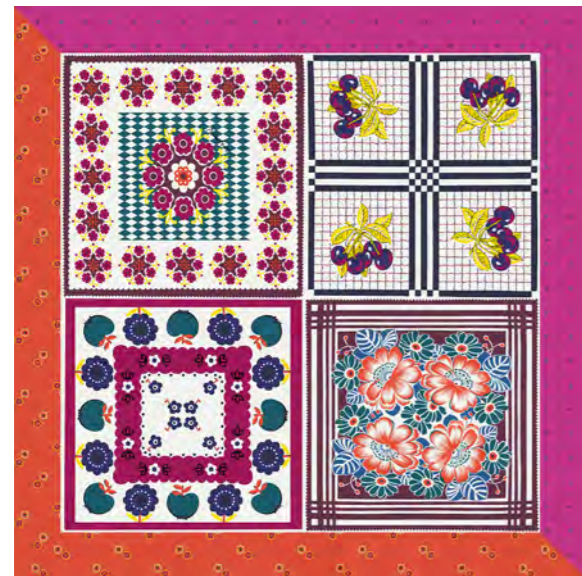
Prints stolen from the cheerful and reassuring atmosphere of a colourful kitchen: dishcloths and napkins with graphic and decorative motifs, with an almost childlike style united in a chessboard with four squares, on soft crêpe de chine and hemmed with a demi-ajour, embroidery effect.



Colour: 1
Colour description: BLUE



Colour: 2
Colour description: PINK



Colour: 3
Colour description: RED



Colour: 4
Colour description: GREEN

ACCESSORIES
MADAME

90x90 - 100% SILK TWILL - HAND-ROLLED HEM
Model: 00578 - Article: 2768 - Style: JT865

25,000-

Luxuriant vegetation that smells of the exotic places we have dreamed of always and give heightened emotions. Composition reinterpreted from the Avantgard archive, printed on soft twill, and hand hemmed.



Colour: 1
Colour description: IVORY



Colour: 2
Colour description: YELLOW



Colour: 3
Colour description: BLUE



Colour: 4
Colour description: SAGE

**ACCESSORIES
COLLAGE**

90x90 - 100% SILK TWILL - HAND-ROLLED HEM
Model: 00578 - Article: 23491 - Style: JT866

27,000-

The mix of prints that combine to create new contemporary patterns is more evident in the pattern created with the collage technique. Paying homage to the still life of modern art, it juxtaposes flowers, geometric patterns and paisley motifs with balanced elegance. Twill-printed and hand hemmed.



Colour: 1
Colour description: RED/BURGUNDY



Colour: 2
Colour description: LILAC



Colour: 3
Colour description: RED



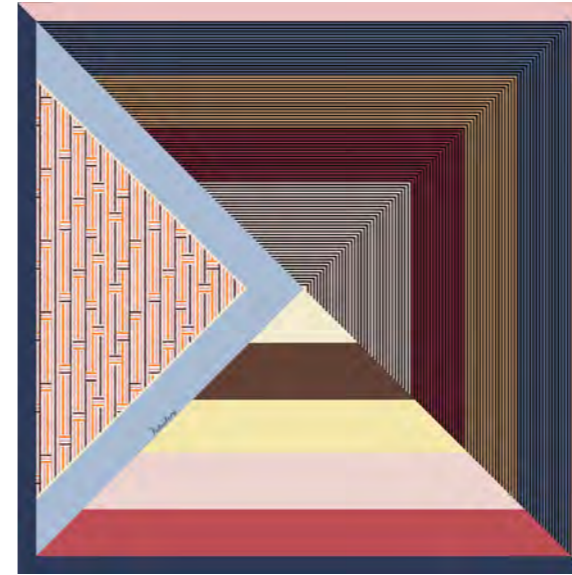
Colour: 4
Colour description: GREEN

**ACCESSORIES
COCKTAIL**

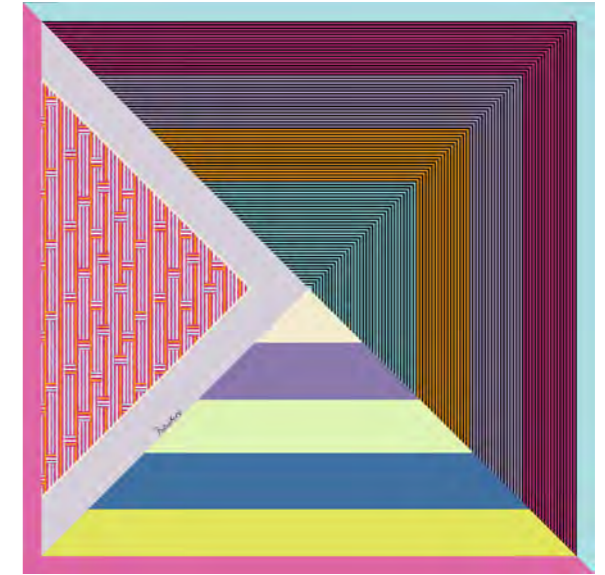
90x90 - 100% SILK JACQUARD - HAND-ROLLED HEM
Model: 00578 - Article: 24857 - Style: JT895

27,000-

Behind the objects is a story and meanings hidden in shape. The Martini cocktail glass is famous for its inverted conical shape (with an opening of about 90 degrees) surmounted on top of a stem that rests on a flat base. The glass should be at a zero degree temperature, and the stem allows it to be held without affecting the drink's temperature. The designer drawing returns on this geometric scarf, made of textured and hand hemmed crêpe satin with brightly coloured triangles for that special toast.



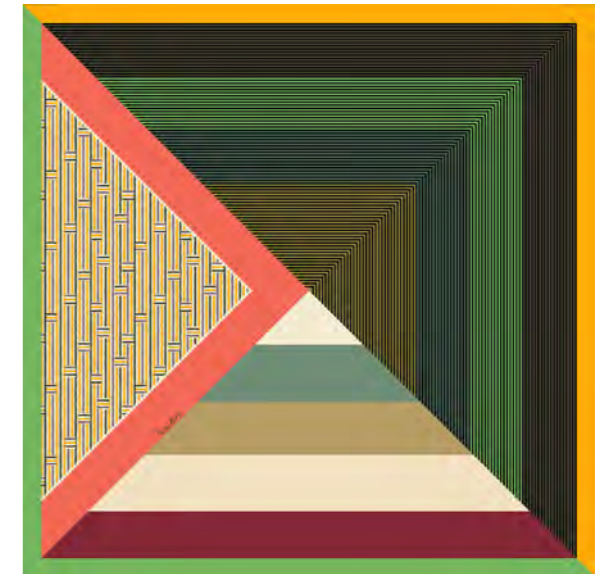
Colour: 1
Colour description: AVIO



Colour: 2
Colour description: FUCHSIA



Colour: 3
Colour description: DEEP BLUE



Colour: 4
Colour description: MEDIUM BROWN

**ACCESSORIES
CARNIVAL**

140x140 - 100% SILK CHIFFON - HAND-MADE BABY FRINGES
Model: 01035 - Article: 21136 - Style: JT867

36,000-

A realistic meadow of flowers, tender daisies in the spotlight, printed on seersucker chiffon for a wavy, impalpable effect. Rustling and delicate, the maxi scarf is made more contemporary by hand-made fringing.



Colour: 1
Colour description: RED/BURGUNDY



Colour: 2
Colour description: FUCHSIA



Colour: 3
Colour description: BLACK



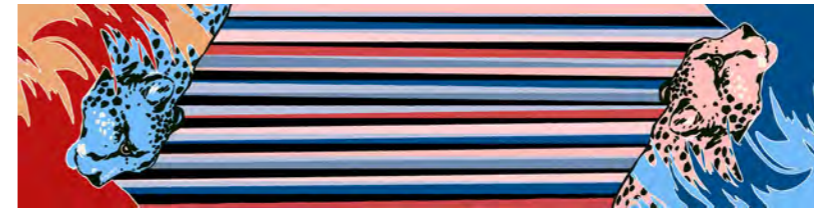
Colour: 4
Colour description: LIGHT GREEN

**ACCESSORIES - REVERSE PRINTING
EYE OF THE TIGER**

50x200 - 100% SILK TWILL - HAND-MADE BABY FRINGES
Model: 01202 - Article: 23916 - Style: BK047

39,000-

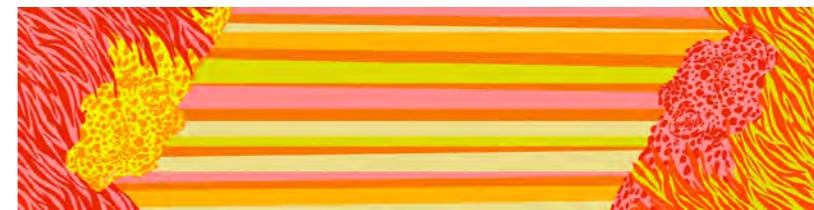
A surprising motif - a tiger's head, hand-drawn in the 1990s and a reverse printing technique that makes the twill stole unique thanks to two different motifs - one on each side - obtained using the latest-generation digital technological innovation.



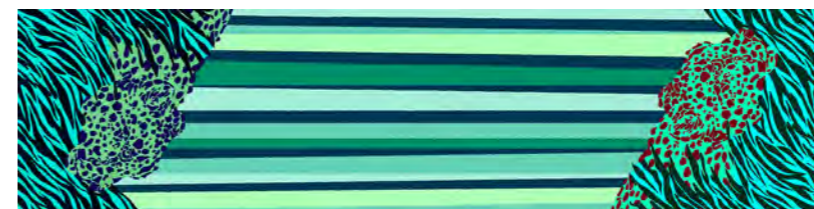
Colour: 1
Colour description: BLUE / GREY



Colour: 2
Colour description: FUCHSIA / ORANGE



Colour: 3
Colour description: GREEN / AVIO

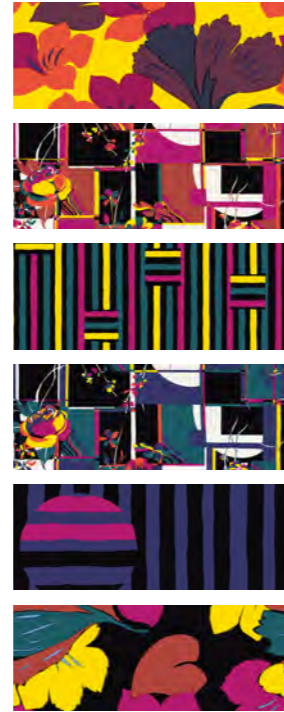
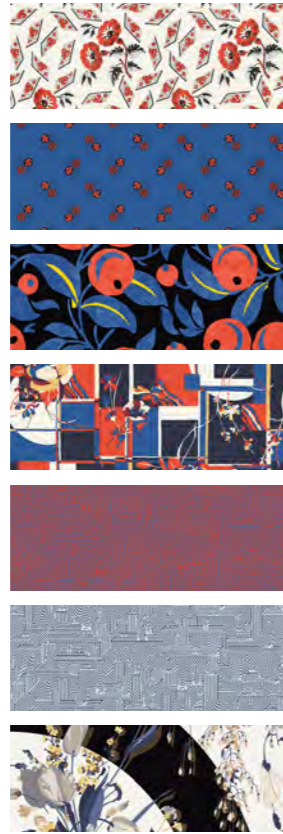


COLOUR PALETTE



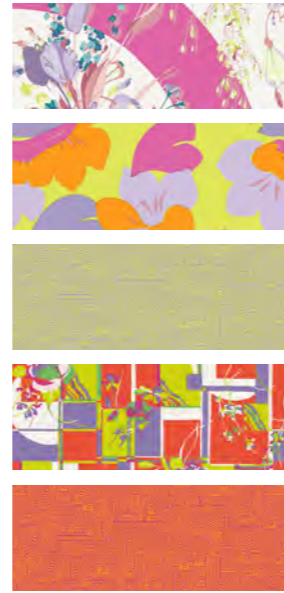
QUIET FEELINGS

EVERLASTINGS



BOLD TYPES

FRESH SORBETTOS



PRINTS

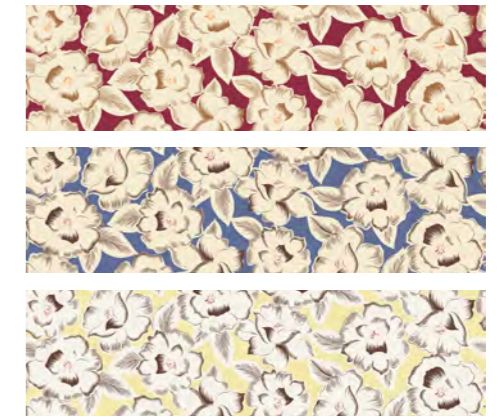
BRITISH CHARM

The three mini-patterns date to 1902 - the year Mantero was founded. They are taken from the Des Anglais book, a collection of cards printed with planches, the ancestors of today's paper tests. They are delightful individually because of their delicate elegance. They are perfect combined because the mix of designs transforms their naïve charm into a new, incredibly fresh and cheerful style.



GRAND TOUR

The 80s motif westernises the classic Hawaiian hibiscus pattern with the inimitable touch of European elegance. The large, graphic and straightforward flowers are delicate yet striking. The colours, mixed, move on the garments for a new narrative.



HIDDEN BERRIES

These lance-shaped leaves - a 70s motif - look like feathers, swaying in the wind and revealing clusters of succulent berries.



PRINTS

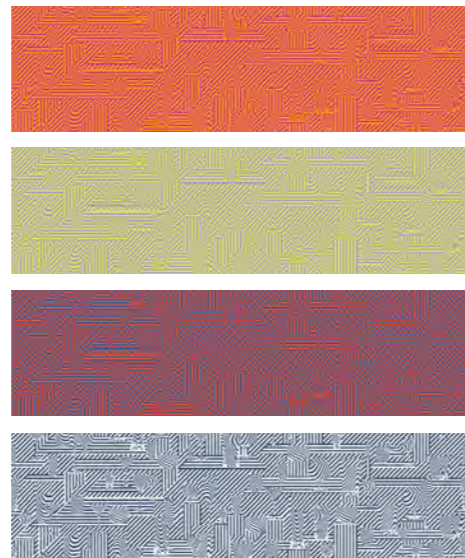
CROSSING

Optical-effect geometries for this mix of stripes and polka dots taken from the 1975 "Selection de nouveautés textiles" collection. Simplicity is never banal in its perfection.



ESCHER

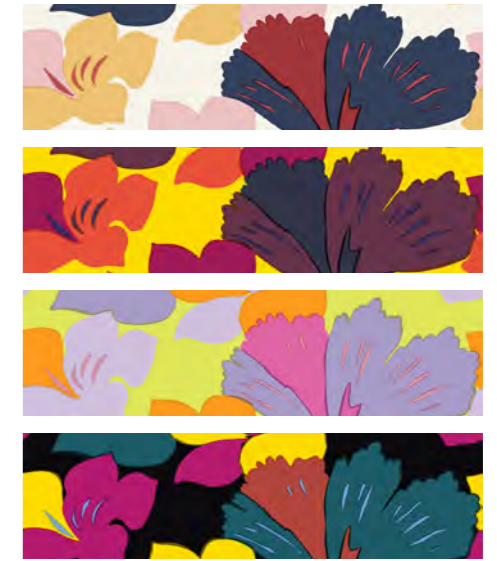
A pattern that is almost a quiz: what do you see? Are the glasses reality or illusion? The stripes are distorted but aren't we the ones to attribute a meaning to their new weaves? Celebration of nightlife summarised by the cocktail time - so much in vogue in the post-war period which is fashionable again - the aperitif ritual is a synonym of freedom and sharing.



PRINTS

EXPLOSION

The Sergio Bini archive - a historic name in the Como district - has been incorporated into the Mantero archive: it reveals all its contemporaneity thanks to patterns like this one, designed in the 1980s. Leaves? Flowers? Giant botanical elements move multi-directionally on the fabric, creating magnificence and yet simplicity. With its full and saturated colour, the hue explodes from the background, and the beauty of the maxi indents creates a deliberate and remarkable scenic effect.



FROM THE WINDOW

The mix of geometries and flowers is the collection's graphic fil rouge. They seem opposites, but they are not. We have interpreted them as complementary since the 1970s. The flowers exist and are made more beautiful by the geometric backgrounds, which would be too bare without these botanical elements.



PRINTS

WISTERIA LANE

A Mantero Collection pattern from 1981. The wisteria ramage represents the feminine and floral main element of the composition, while the circle section in full colour is the masculine side element: decisive and determined, it would make no sense without her, but it makes her beauty shine. All the composition flowers have the characteristic subtle outline.



FABRICS

SILK TWILL

This name identifies the silk fabric with its typical diagonal weave that gives it reflections and iridescence. Twill is resistant, although less elastic than other silks and can maintain folds. Compared to canvas weave, the twill weave makes the fabric soft and delicate. This par - excellence scarf fabric gives garments elegance, brightness and invaluable wearability. In the collection we have introduced a light and soft twill (14 mm) and for the duster coat a heavier one (17mm).

SILK CRÊPE

A fabric featuring a creased surface due to the weaving of threads with different torsion, giving the fabric a natural elasticity. Its natural haze transforms silk into an easy going fabric. Soft on skin, it has a perfect dropping.

COTTON POPLIN

This is a resistant, fresh and high-quality fabric. The fabric is made from exceptionally fine and compact yarns and the mercerisation process makes the thread shiny and smooth. A curious fact: the name poplin comes from "papalina", a fabric so called because it was produced in Avignon, France, in the 14th century, where the Pope resided.

SPECIAL ACCESSORIES

CAPRI

17,000-

BOW HEADBAND - 10/2x90 - 100% SILK TWILL
 Model: 01196 - Article: 7425 - Style: 725

Summer on: wearing colour around your face gives you a boost of energy and makes going to the hairdresser unnecessary. Fixing your hair with this silk twill headband with tails that recall our bandeau will make all women look like divas.



Colour: 1
 Colour description: BLUE



Colour: 2
 Colour description: PETROL



Colour: 3
 Colour description: ORANGE

SPECIAL ACCESSORIES
SAINT TROPEZ

BANDANA - 35x35x50 - 100% SILK TWILL - APPLIED MICRO POMPON
Model: 01203 - Article: 7425 - Style: JU163

17,000-

A' la plage, with style: the new bandana is in printed twill and is a "gentle" and feminine model with its ribbons and the "point noué" detail in contrasting colour, to feel all like BB.



Colour: 1
Colour description: RED/BURGUNDY



Colour: 2
Colour description: BLACK



Colour: 3
Colour description: SPEARMINT

SPECIAL ACCESSORIES
DEAUVILLE

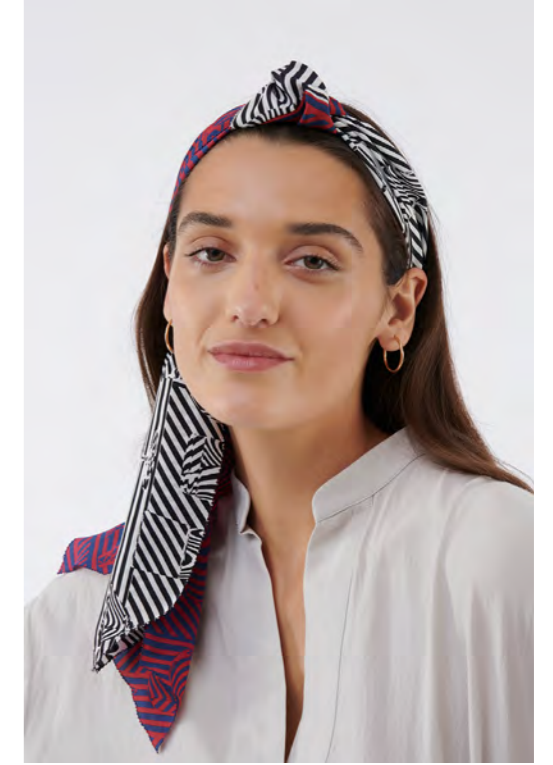
21,000-

DOUBLE ASCOT - 11x150 - 100% SILK CRÊPE DE CHINE - DEMI AJOUR-HEM
Model: 01197 - Article: 2000 - Style: YM949

A feminine ascot with an exquisitely retro style contemporarily reinterpreted with a play of overlaps. The collection's tailoring accessory is made of delicate crêpe de chine with a demi ajour finish.



Colour: 1
Colour description: FUCHSIA / ACID GREEN



Colour: 2
Colour description: DARK RED / BLACK



Colour: 3
Colour description: PINK / LIGHT BLUE

SPECIAL ACCESSORIES

IBIZA

BANDEAU - 10/2x140 - 100% SILK TWILL - APPLIED BEADED FRINGES

Model: 01201 - Article: 7425 - Style: JU164

The beloved and highly versatile silk twill bandeau is embellished by beaded fringes: a hippie chic detail that doesn't go unnoticed.



Colour: 1
Colour description: BLUE



Colour: 2
Colour description: PINK



Colour: 3
Colour description: BLACK

SPECIAL ACCESSORIES

AROUND

SASH - 10/2x60 - 100% SILK TWILL

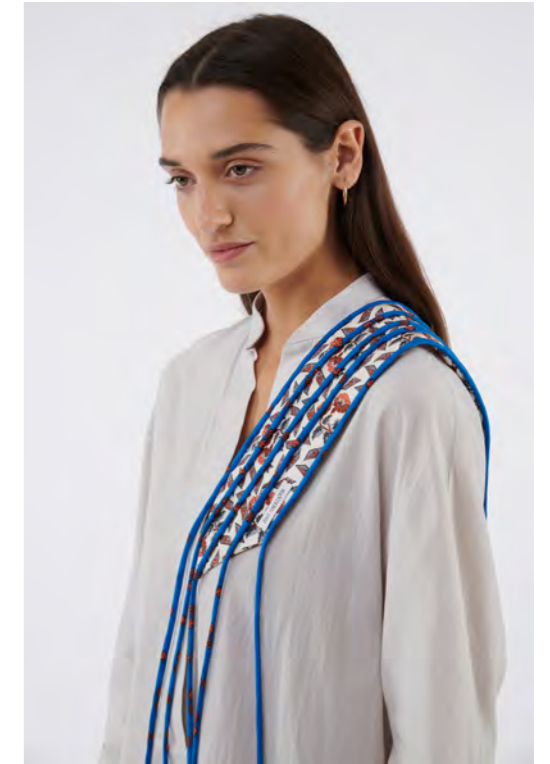
Model: 01198 - Article: 7425 - Style: 724

A silk twill sash, a western version of the obi for this long-awaited summer. It wraps around with silk strings and tightens with elegance adding an original touch to any outfit.

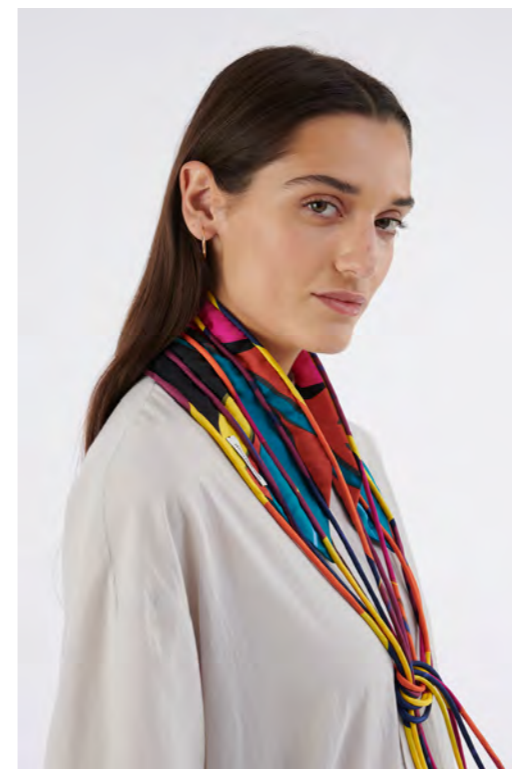
27,000-



Colour: 1
Colour description: RED/BURGUNDY



Colour: 2
Colour description: CREAM



Colour: 3
Colour description: BLACK

SPECIAL ACCESSORIES
MIAMI

CAPELET WITH BUTTONS - 100% SILK TWILL
Model: 01199 - Article: 2811 - Style: 723

39,000-

To cover up elegantly and quickly, in situations where we don't want to expose ourselves, maybe just a little bit. Here's the cape - but the most original will wear it as a sarong skirt for a glamorous touch on the beach or by the pool - in a full-bodied 17 mm silk twill that joins two panels in matching prints, thanks to tortoiseshell buttons.



Colour: 1
Colour description: BLUE



Colour: 2
Colour description: PETROL



Colour: 3
Colour description: ORANGE

SPECIAL ACCESSORIES - REVERSE PRINTING
ANDALUSIA

49,000-

FRINGED SHAWL - 130x130x141 - 100% SILK TWILL - FRINGES: 100% POLYESTER
Model: 01204 - Article: 23916 - Style: BK048

A triangular shawl in silk twill embellished with long fringes and the 80s-inspired Hawaiian floral motifs which are prominent in the RtW collection.



Colour: 1
Colour description: BLACK / BLUE



Colour: 2
Colour description: BLUE / BURGUNDY



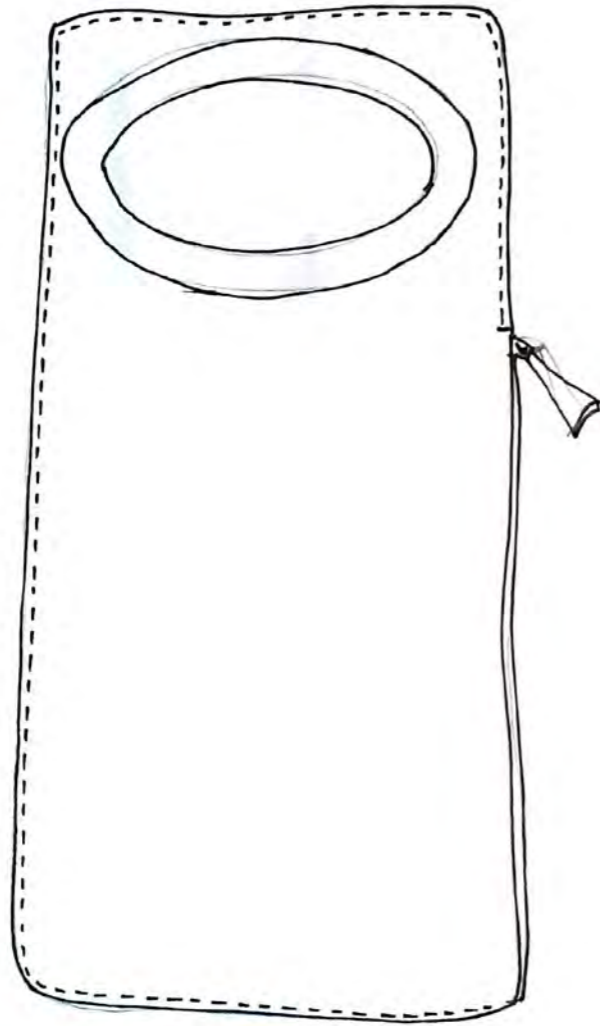
Colour: 3
Colour description: GREEN / PINK

BAGS
ROUNDOWN

FLAT ZIPPED MINI BAG - 100% SILK - LINING: 100% POLYESTER
Model: 01188 - Article: 23901 - Style: 728

59,000-

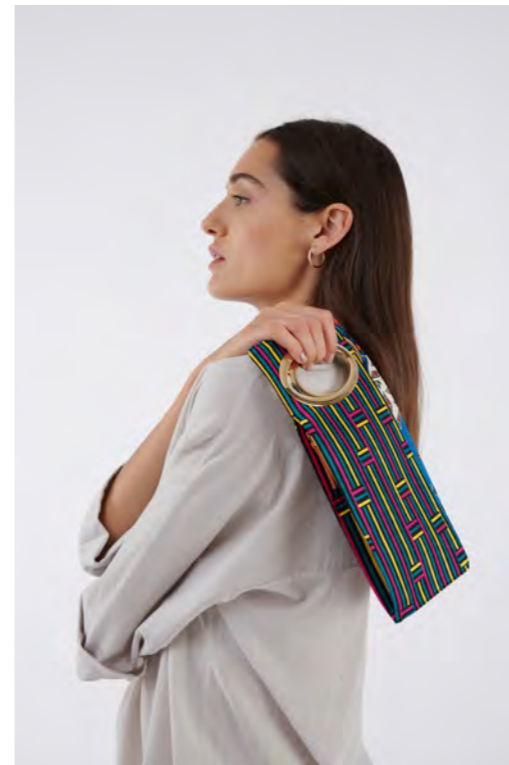
We have all learnt to be flexible, adapt to new situations, live and move in different ways and appreciate beauty combined with practicality: so the vertical silk tote, rigorous and pure, becomes a jewel by the integrated oval handle that softens its apparent rigidity, making it original and unique. The stain-resistant and anti-drip treatment make the printed silk twill less delicate.



Colour: 1
Colour description: CREAM



Colour: 2
Colour description: ROYAL



Colour: 3
Colour description: PETROL



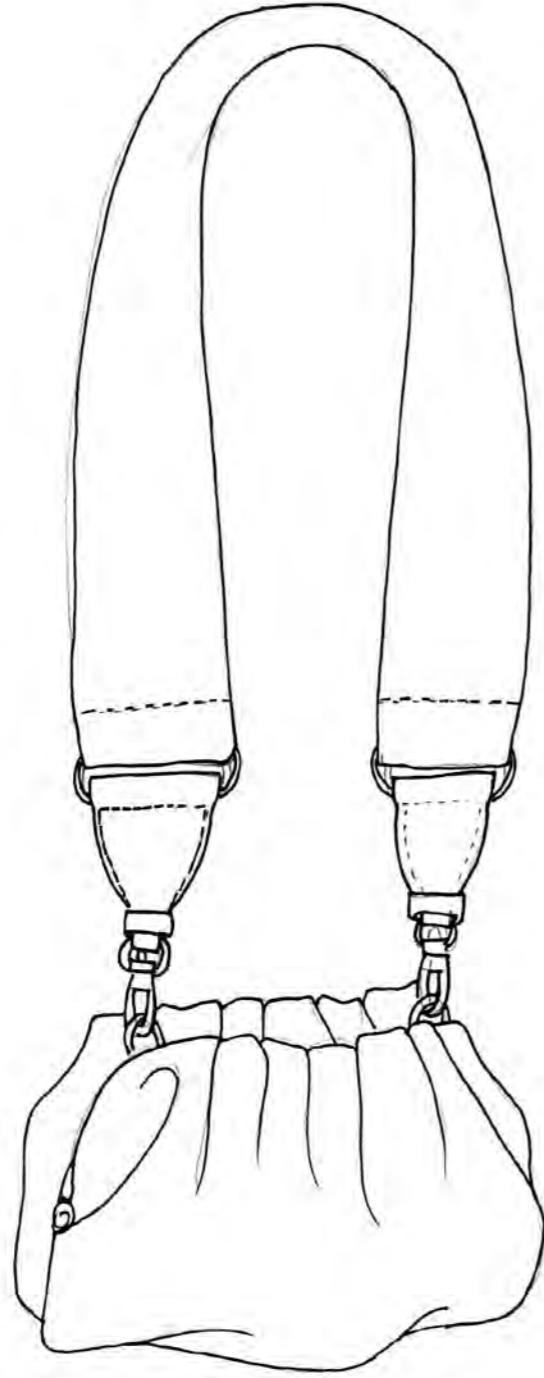
Colour: 4
Colour description: ACID GREEN

BAGS
EVERYBODY

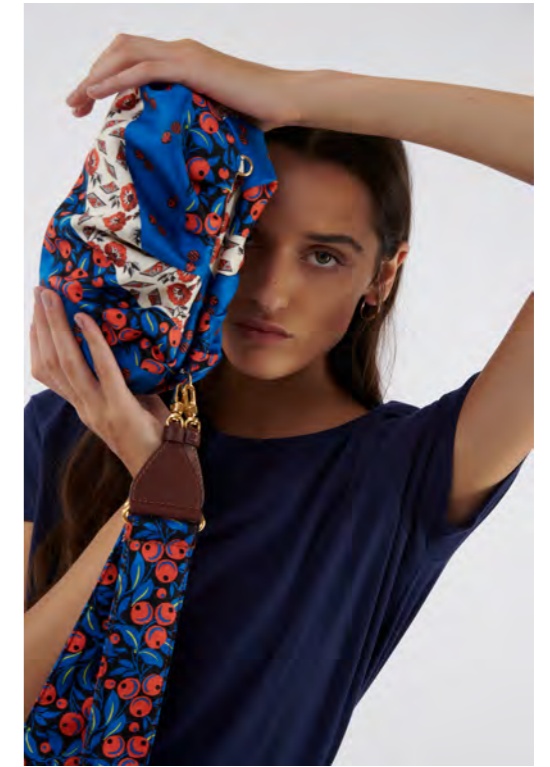
MINI CLUTCH - 100% SILK - LINING: 100% POLYESTER - CONTAINS NON-TEXTILE PARTS OF ANIMAL ORIGIN
Model: 01189 - Article: 23901 - Style: 729

The mini clutch with its concealed fastening contains the essentials and the light-heartedness we dream. Soft and feminine, it can be carried by hand or on the shoulder thanks to the silk shoulder strap with leather details. The stain-resistant and anti-drip treatment make the printed silk twill less delicate.

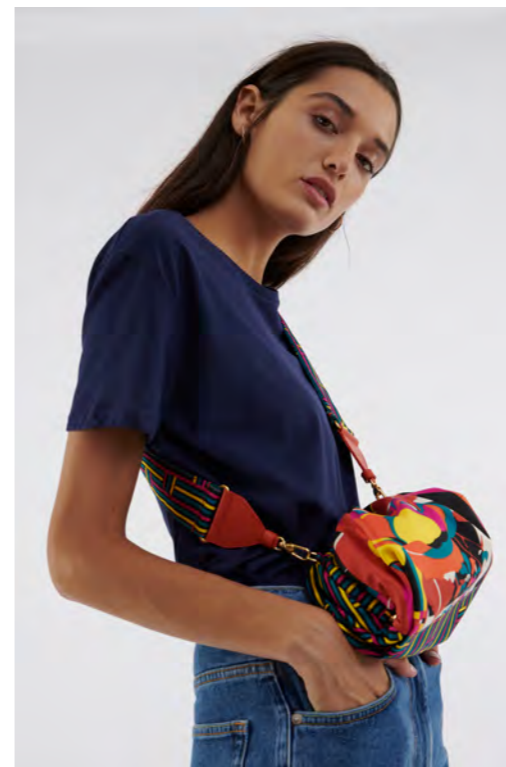
65,000-



Colour: 1
Colour description: CREAM



Colour: 2
Colour description: ROYAL



Colour: 3
Colour description: RED/BURGUNDY



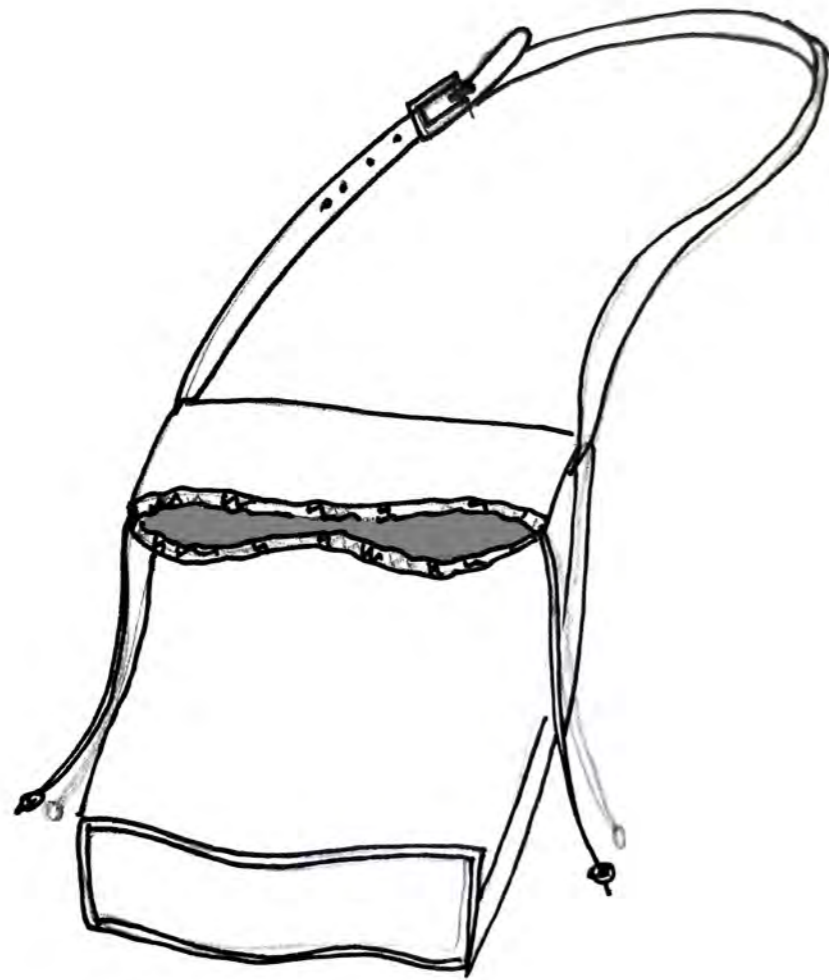
Colour: 4
Colour description: ACID GREEN

BAGS
GLOBE TROTTER

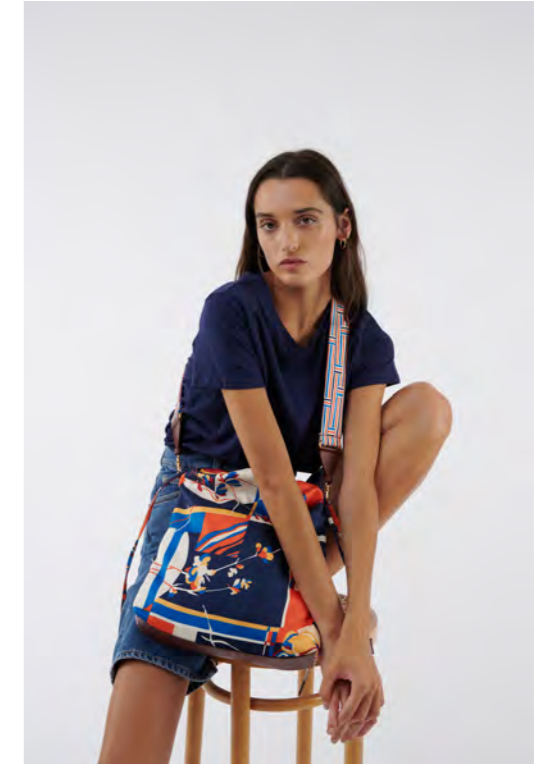
DRAWSTRING TOTE - 100% SILK - LINING: 100% POLYESTER - CONTAINS NON-TEXTILE PARTS OF ANIMAL ORIGIN
Model: 01190 - Article: 23901 - Style: 730

65,000-

Back to travelling, at last. The drawstring tote will accompany us. Compact but roomy, it is the must-have for our holidays, but can we ever do without it in the city?
The stain-resistant and anti-drip treatment make the printed silk twill less delicate.



Colour: 1
Colour description: LIGHT BLUE



Colour: 2
Colour description: BLUE



Colour: 3
Colour description: YELLOW



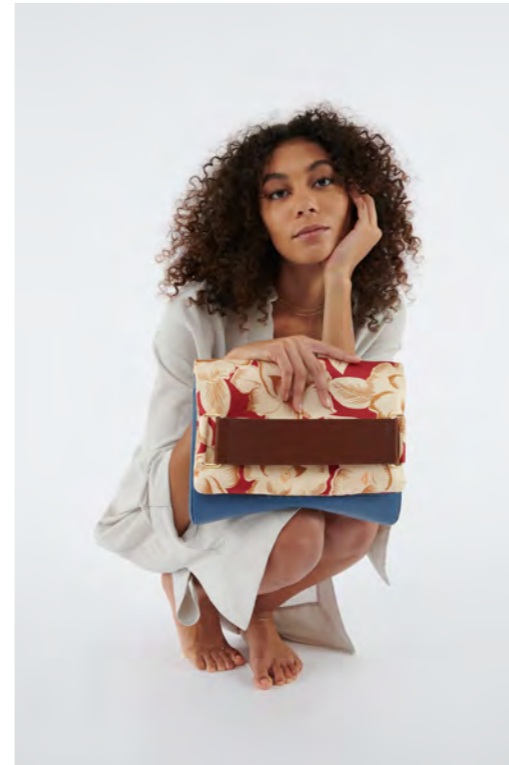
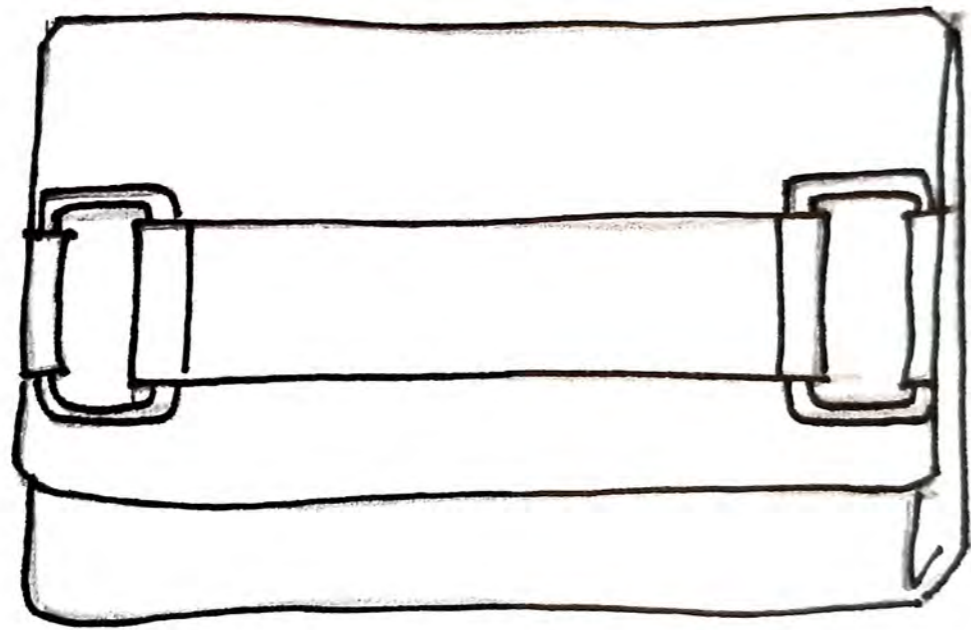
Colour: 4
Colour description: FUCHSIA

BAGS
EVERYTIME

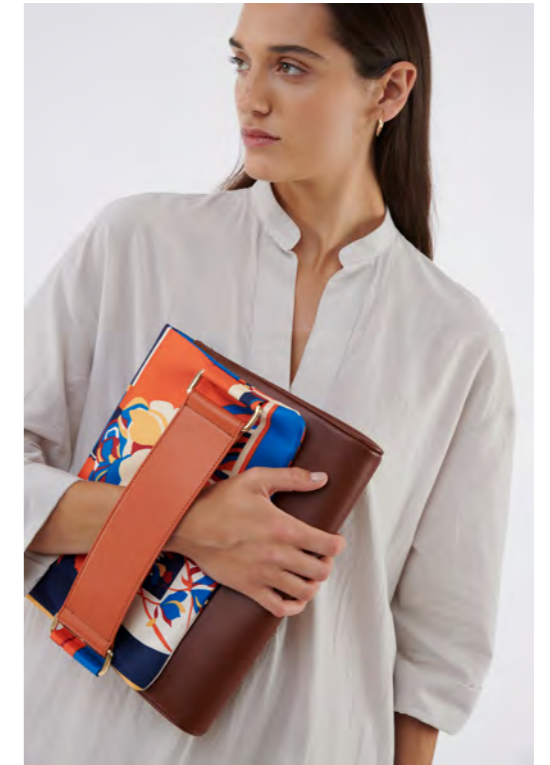
MAXI POCLETTE - 100% SILK - LINING: 100% POLYESTER - CONTAINS NON-TEXTILE PARTS OF ANIMAL ORIGIN
Model: 01157 - Article: 23901 - Style: 727

79,000-

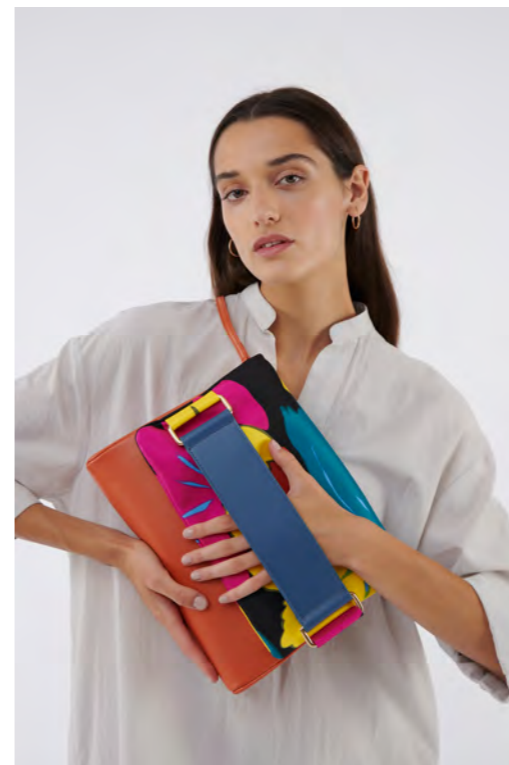
An impressive handbag: this is the most functional way to carry the Maison's DNA expressed through silk print. The large loop doubles as a handle, is stylistic and functional, and the shoulder strap makes it comfortable. The stain-resistant and anti-drip treatment make the printed silk twill less delicate.



Colour: 1
Colour description: RED/BURGUNDY



Colour: 2
Colour description: BLUE



Colour: 3
Colour description: BLACK



Colour: 4
Colour description: ACID GREEN

**BAGS
TOGETHER**

SHOULDER BELT - 100% SILK TWILL - CONTAINS NON-TEXTILE PARTS OF ANIMAL ORIGIN
Model: 01200 - Article: 23901 - Style: 731

14,000-

Printed silk shoulder bags are available individually for a playful combination of different patterns, prints and colours.



Colour: 1
Colour description: RED/BURGUNDY



Colour: 2
Colour description: CREAM



Colour: 5
Colour description: PETROL



Colour: 6
Colour description: BLACK



Colour: 3
Colour description: BLUE



Colour: 4
Colour description: ROYAL



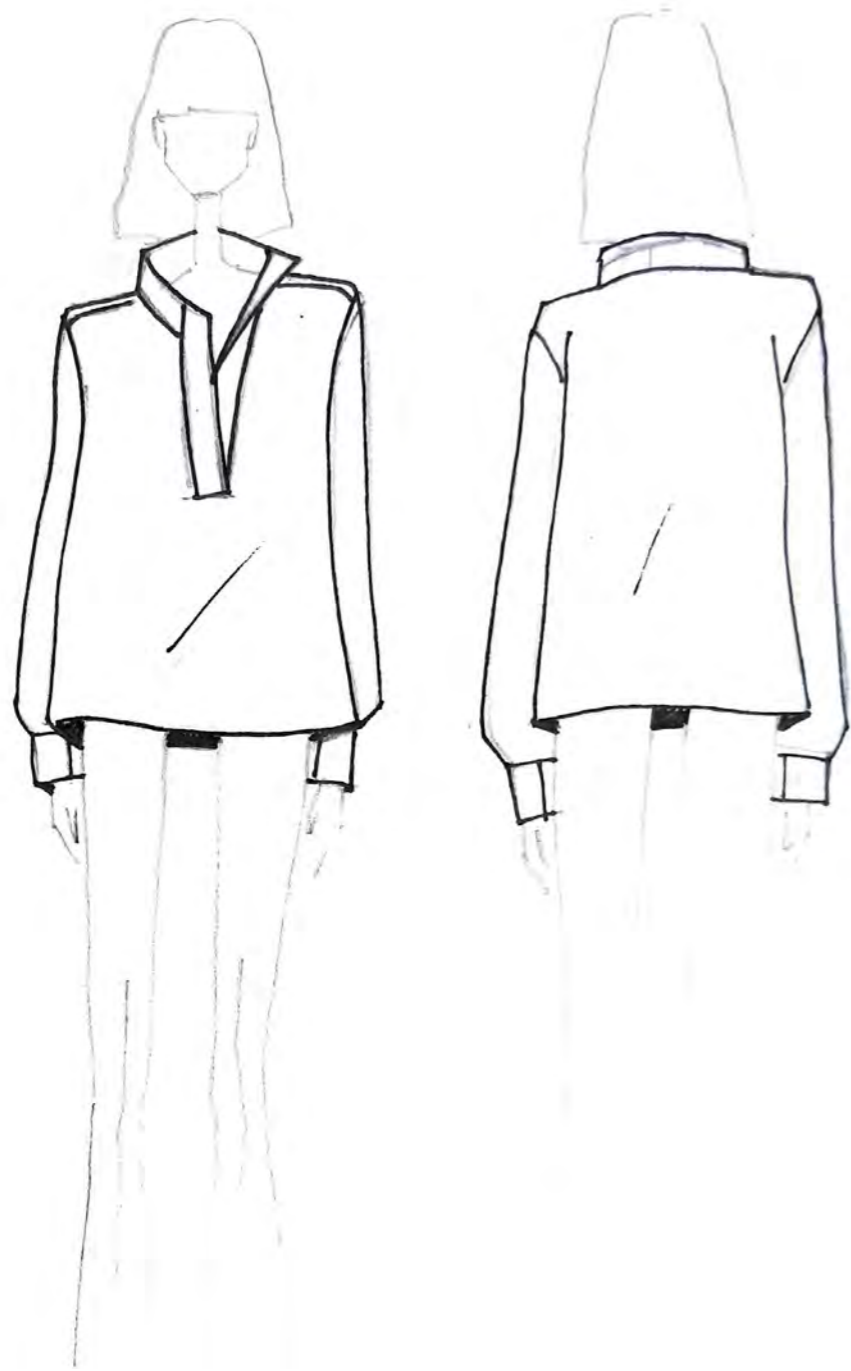
Colour: 7
Colour description: ACID GREEN



Colour: 8
Colour description: FUCHSIA

READY TO WEAR
LAETITIA
 STAND UP COLLAR SHIRT

Stand-up collar, half front opening, long sleeves, which is perfect for a comfortable flap. A small, enamelled button adds a further tailored touch.



Model: 01175
 Article: 20085
 Style: 723B
 Colour: 1 - Colour description: CREAM
 Composition: 100% COTTON
 Size: 38 - 40 - 42 - 44 - 46

47,000-



Model: 01174
 Article: 20085
 Style: 724B
 Colour: 1 - Colour description: BLUE
 Composition: 100% COTTON
 Size: 38 - 40 - 42 - 44 - 46

47,000-



Model: 01175
 Article: 20085
 Style: 725B
 Colour: 1 - Colour description: YELLOW
 Composition: 100% COTTON
 Size: 38 - 40 - 42 - 44 - 46

47,000-

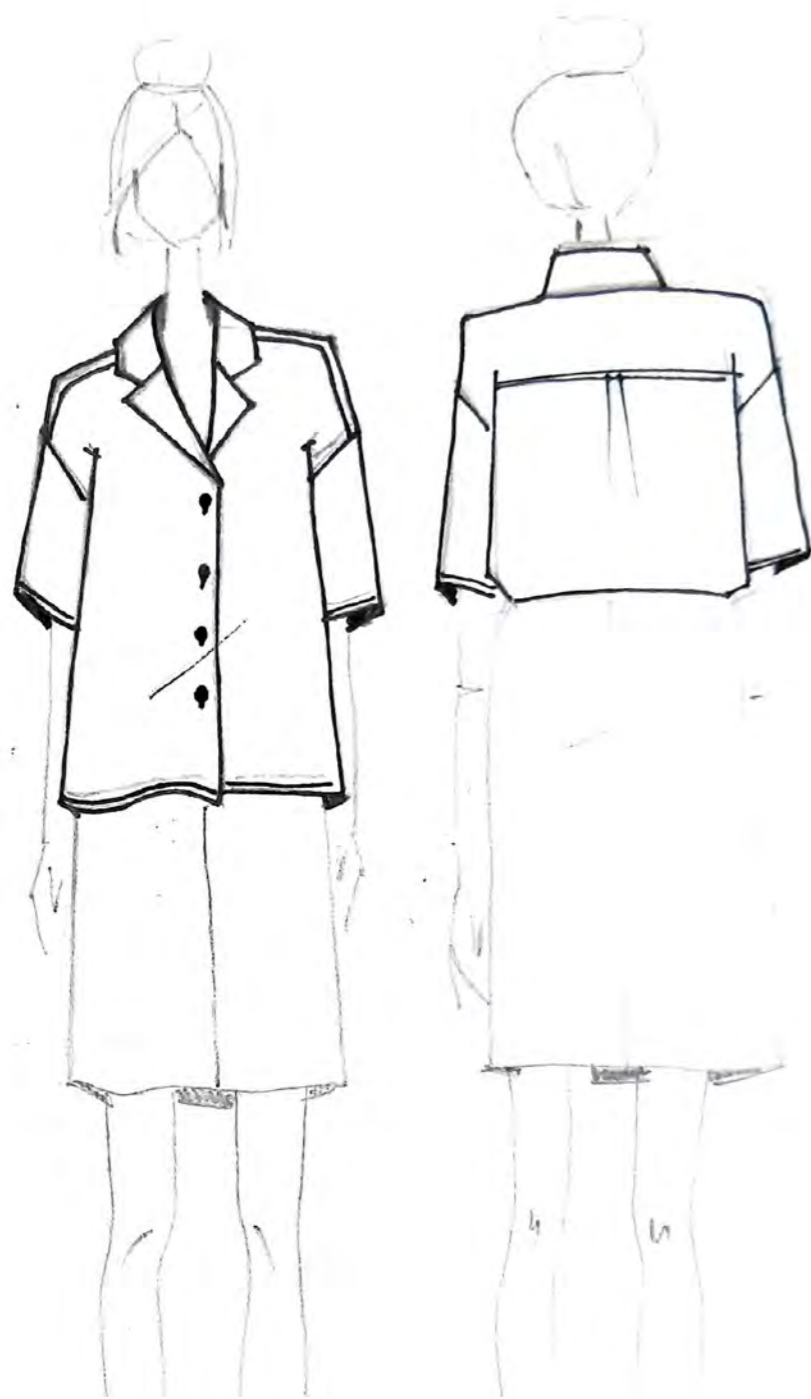


Model: 01175
 Article: 2770
 Style: 726B
 Colour: 1 - Colour description: BLACK
 Composition: 100% SILK TWILL
 Size: 38 - 40 - 42 - 44 - 46

55,000-

READY TO WEAR
MICHELLE
 PAJAMA SHIRT

A model that combines tailoring with a relaxed, gender-fluid look thanks to its proportions. Pajama collar, dropped shoulder, back carré and tortoiseshell effect buttons. Made from 14 mm silk twill.



Model: 01184
 Article: 2770
 Style: 723T
 Colour: 1 - Colour description: CREAM
 Composition: 100% SILK TWILL
 Size: 38 - 40 - 42 - 44 - 46

49,000-



Model: 01185
 Article: 2770
 Style: 724T
 Colour: 1 - Colour description: ROYAL
 Composition: 100% SILK TWILL
 Size: 38 - 40 - 42 - 44 - 46

49,000-



Model: 01184
 Article: 2770
 Style: 725T
 Colour: 1 - Colour description: PETROL
 Composition: 100% SILK TWILL
 Size: 38 - 40 - 42 - 44 - 46

49,000-

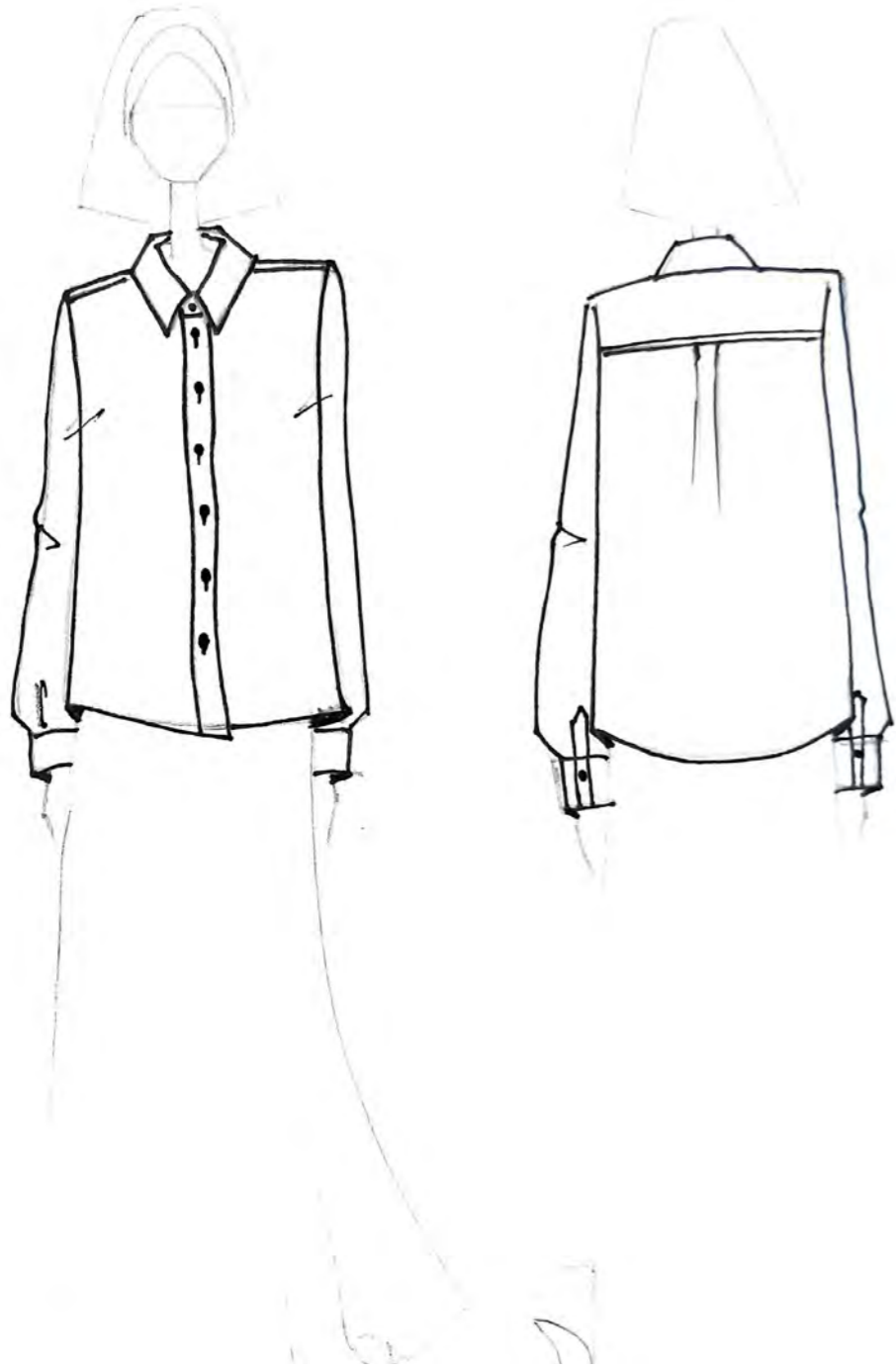


Model: 01186
 Article: 2770
 Style: 726T
 Colour: 1 - Colour description: ORANGE
 Composition: 100% SILK TWILL
 Size: 38 - 40 - 42 - 44 - 46

49,000-

READY TO WEAR
BEATRICE
 ESSENTIAL SHIRT

An icon of simplicity. Like the classic scarf, the basic shirt gains personality from the print that dresses its essential silhouette where proportions (body, back carré, collar and cuffs) are balanced and have pure lines



Model: 01143
 Article: 2000
 Style: 723C
 Colour: 1 - Colour description: LIGHT BLUE
 Composition: 100% SILK CRÊPE DE CHINE
 Size: 38 - 40 - 42 - 44 - 46

49,000-



Model: 01143
 Article: 2000
 Style: 724C
 Colour: 1 - Colour description: BLUE
 Composition: 100% SILK CRÊPE DE CHINE
 Size: 38 - 40 - 42 - 44 - 46

49,000-



Model: 01142
 Article: 2000
 Style: 725C
 Colour: 1 - Colour description: BLACK
 Composition: 100% SILK CRÊPE DE CHINE
 Size: 38 - 40 - 42 - 44 - 46

49,000-



Model: 01142
 Article: 2770
 Style: 726C
 Colour: 1 - Colour description: PINK
 Composition: 100% SILK TWILL
 Size: 38 - 40 - 42 - 44 - 46

49,000-

READY TO WEAR
VITTORIA
 SLIT MIDI SKIRT

In soft fluid crêpe de chine, the skirt accompanies every woman's body shape and emphasises her grace. The slit makes it feminine and gracefully accompanies your movements.



Model: 01176
 Article: 2000
 Style: 723G
 Colour: 1 - Colour description: LIGHT BLUE
 Composition: 100% SILK CRÊPE DE CHINE
 Size: 38 - 40 - 42 - 44 - 46

65,000-



Model: 01177
 Article: 2000
 Style: 724G
 Colour: 1 - Colour description: BLUE
 Composition: 100% SILK CRÊPE DE CHINE
 Size: 38 - 40 - 42 - 44 - 46

65,000-



Model: 01177
 Article: 2000
 Style: 725G
 Colour: 1 - Colour description: RED/BURGUNDY
 Composition: 100% SILK CRÊPE DE CHINE
 Size: 38 - 40 - 42 - 44 - 46

65,000-

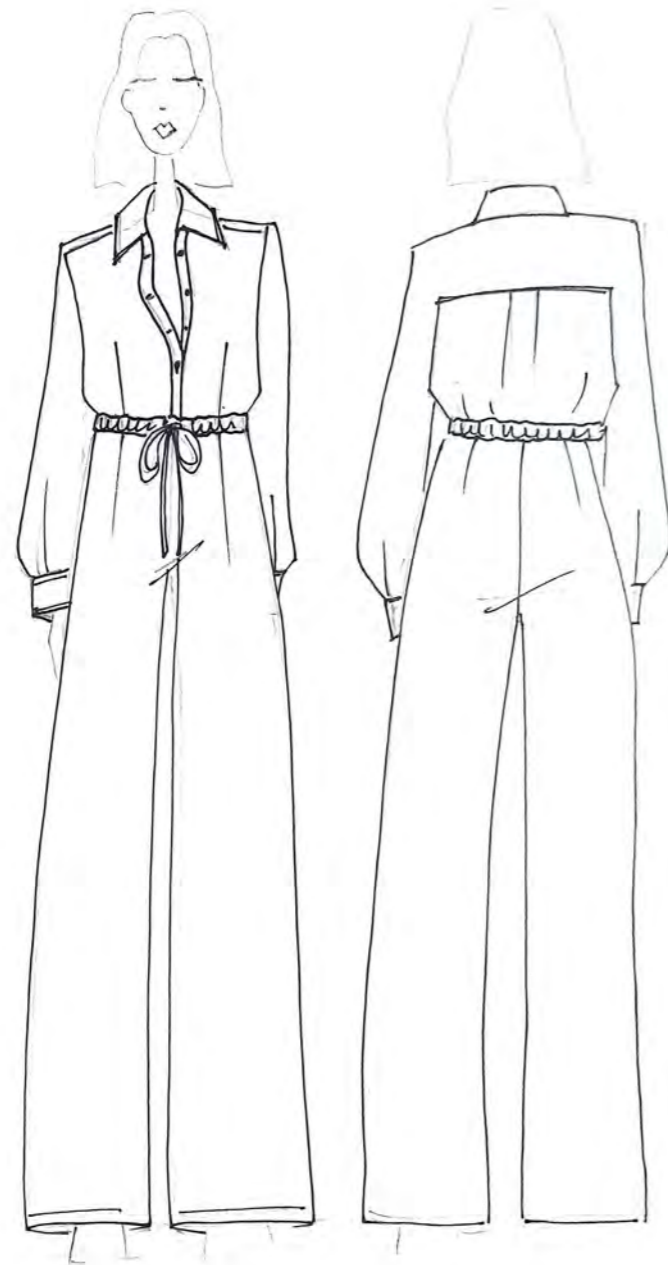


Model: 01177
 Article: 2000
 Style: 726G
 Colour: 1 - Colour description: YELLOW
 Composition: 100% SILK CRÊPE DE CHINE
 Size: 38 - 40 - 42 - 44 - 46

65,000-

READY TO WEAR
BONNIE
 BOILER SUIT

The one-piece jumpsuit has proven to be an absolute must-have. Invented by Thayaht in the futurist era as a dress to contrast the bourgeois fashion, the jumpsuit is now more fashionable than ever. If you play with the right accessories and small styling details, it is a fun and highly versatile garment. The cotton Boiler Suit has a shirt collar, a comfortable fit without being oversized. It's the perfect outfit for a busy day. Just add a pair of boots or trainers and a bag to create a complete outfit. But by changing the accessories and choosing sandals with heels, the look becomes more sophisticated. The printed version becomes ideal to be packed for the holidays. Practical and eye-catching, fresh and transformist, it can be worn with flip-flops.



Model: 01182
 Article: 20085
 Style: 723J
 Colour: 1 - Colour description: RED/BURGUNDY
 Composition: 100% COTTON
 Size: 38 - 40 - 42 - 44 - 46

80,000-



Model: 01182
 Article: 20085
 Style: 724J
 Colour: 1 - Colour description: CREAM
 Composition: 100% COTTON
 Size: 38 - 40 - 42 - 44 - 46

80,000-



Model: 01182
 Article: 20085
 Style: 725J
 Colour: 1 - Colour description: BLUE
 Composition: 100% COTTON
 Size: 38 - 40 - 42 - 44 - 46

80,000-



Model: 01183
 Article: 20085
 Style: 726J
 Colour: 1 - Colour description: PETROL
 Composition: 100% COTTON
 Size: 38 - 40 - 42 - 44 - 46

80,000-

READY TO WEAR
MARIANNA
 SHIRT DRESS

A silhouette reminiscent of Laetitia shirt - with the small, enamelled button adding a little extra tailored flair - underpins the mini dress in silk twill with a back carré and overlap fixings. It has a stand-up collar, and the deep opening becomes a subtle neckline. It is reminiscent of the little dresses for the new women of the 1960s, aware of their role, proud of their femininity but eager for freedom, even when dressing.



Model: 01178
 Article: 2770
 Style: 7231
 Colour: 1 - Colour description: RED/BURGUNDY
 Composition: 100% SILK TWILL
 Size: 38 - 40 - 42 - 44 - 46

85,000-



Model: 01178
 Article: 2770
 Style: 7241
 Colour: 1 - Colour description: PETROL
 Composition: 100% SILK TWILL
 Size: 38 - 40 - 42 - 44 - 46

85,000-



Model: 01179
 Article: 2770
 Style: 7251
 Colour: 1 - Colour description: ACID GREEN
 Composition: 100% SILK TWILL
 Size: 38 - 40 - 42 - 44 - 46

85,000-



Model: 01179
 Article: 2770
 Style: 7261
 Colour: 1 - Colour description: BLACK
 Composition: 100% SILK TWILL
 Size: 38 - 40 - 42 - 44 - 46

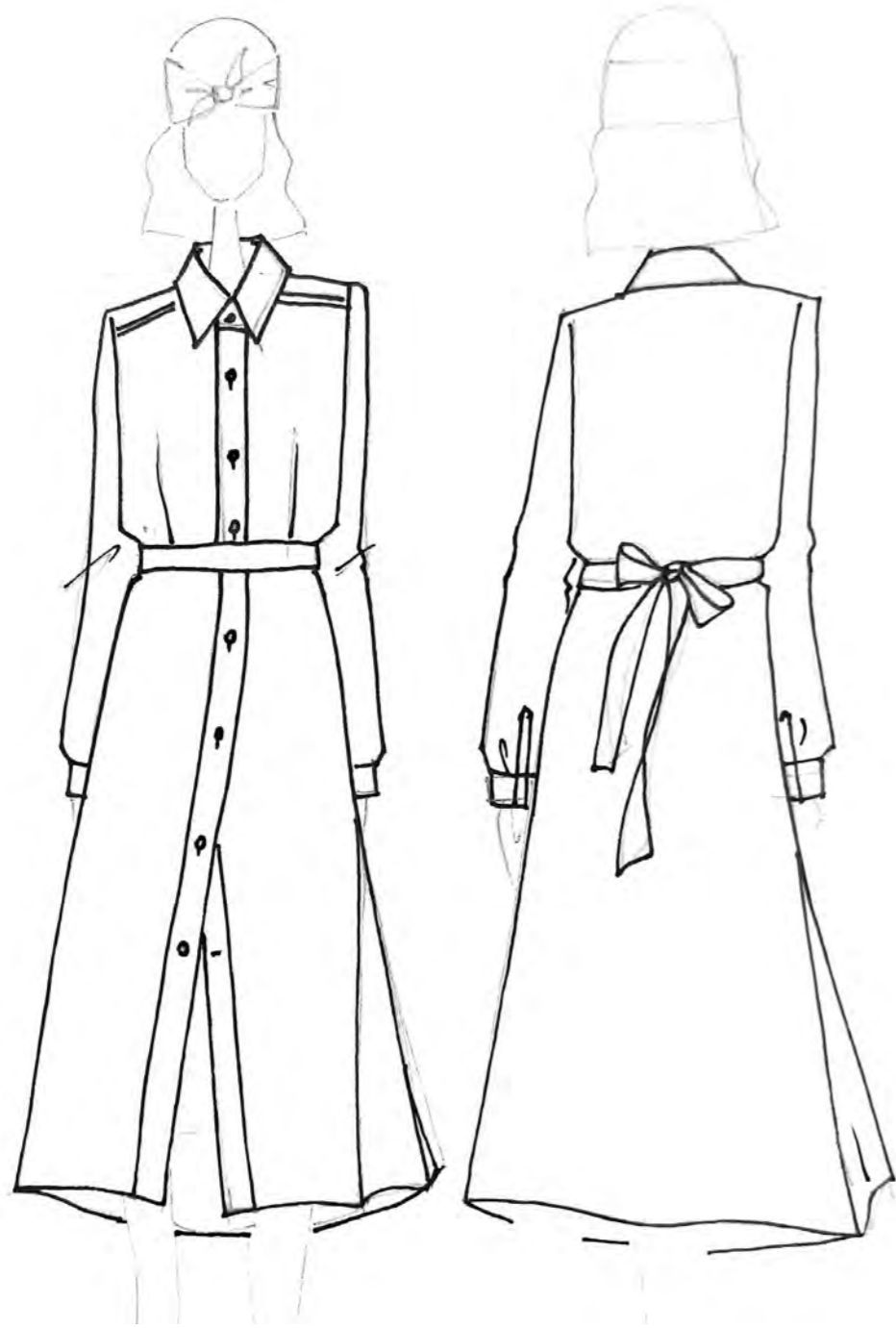
85,000-

READY TO WEAR

MARISA

MIDI CHEMISIER

Midi chemisier, open at the front, silk covered supreme buttons, inside side pockets and silk belt.



Model: 01120
 Article: 2000
 Style: 723A
 Colour: 1 - Colour description: LIGHT BLUE
 Composition: 100% SILK CRÊPE DE CHINE
 Size: 38 - 40 - 42 - 44 - 46

95,000-



Model: 01085
 Article: 2000
 Style: 724A
 Colour: 1 - Colour description: ROYAL
 Composition: 100% SILK CRÊPE DE CHINE
 Size: 38 - 40 - 42 - 44 - 46

95,000-



Model: 01085
 Article: 2000
 Style: 725A
 Colour: 1 - Colour description: RED/BURGUNDY
 Composition: 100% SILK CRÊPE DE CHINE
 Size: 38 - 40 - 42 - 44 - 46

95,000-



Model: 01150
 Article: 2770
 Style: 726A
 Colour: 1 - Colour description: FUCHSIA
 Composition: 100% SILK TWILL
 Size: 38 - 40 - 42 - 44 - 46

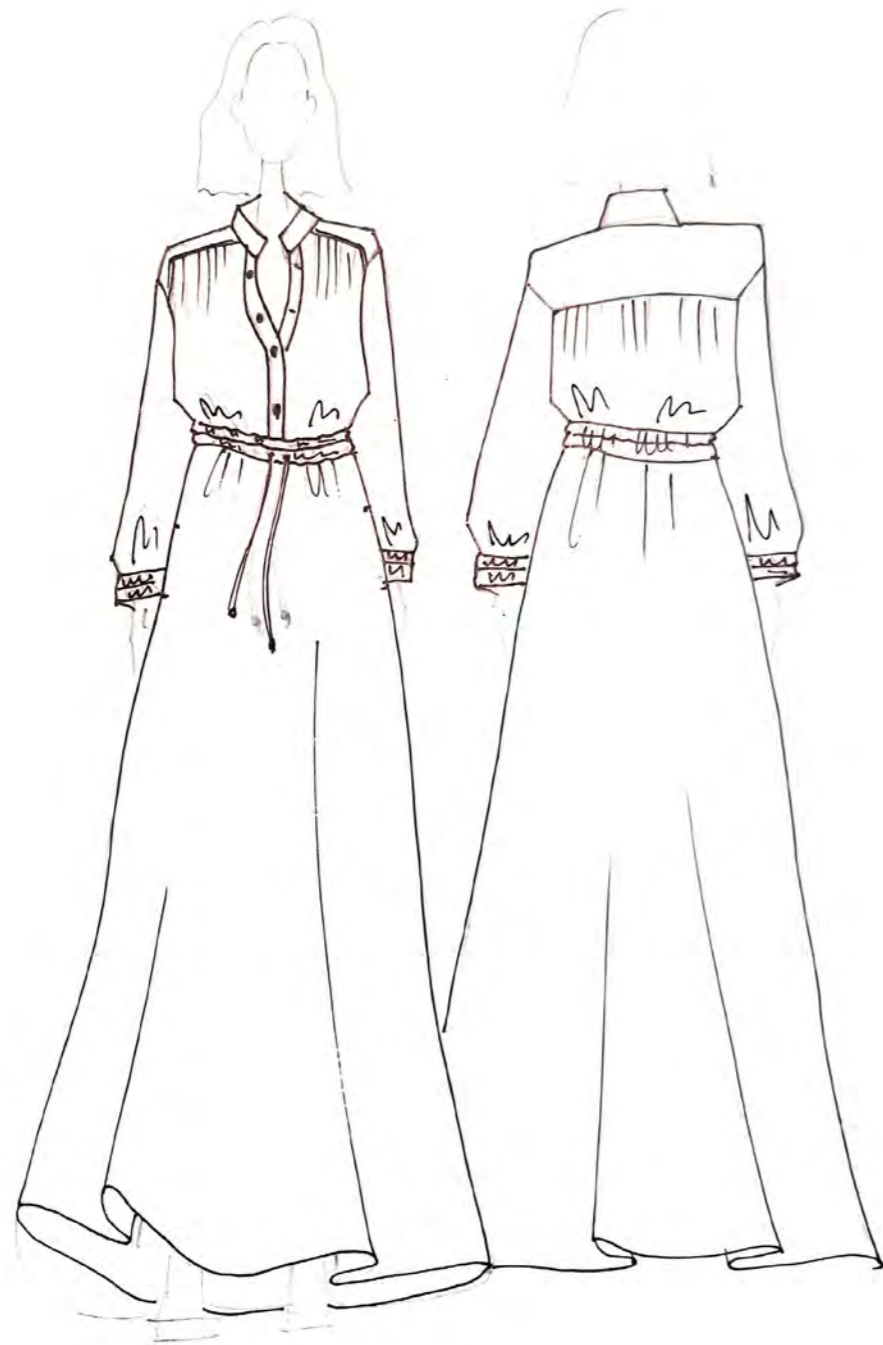
95,000-

READY TO WEAR

ELLA

KAFTAN DRESS

A volume effect, providing balance. The soft kaftan in crêpe de chine makes even the most classic look trendy. From a dress for special occasions, it can become the perfect garment to feel cheerful and colourful since the morning, in every circumstance by combining it with different shoes. By adjusting the drawstring you can obtain a different tucked hem effect.



Model: 01181
 Article: 2000
 Style: 723K
 Colour: 1 - Colour description: RED/BURGUNDY
 Composition: 100% SILK CRÊPE DE CHINE
 Size: 38 - 40 - 42 - 44 - 46

100,000



Model: 01181
 Article: 2000
 Style: 724K
 Colour: 1 - Colour description: BLUE
 Composition: 100% SILK CRÊPE DE CHINE
 Size: 38 - 40 - 42 - 44 - 46

100,000



Model: 01180
 Article: 2000
 Style: 725K
 Colour: 1 - Colour description: BLACK
 Composition: 100% SILK CRÊPE DE CHINE
 Size: 38 - 40 - 42 - 44 - 46

100,000



Model: 01181
 Article: 2000
 Style: 726K
 Colour: 1 - Colour description: FUCHSIA
 Composition: 100% SILK CRÊPE DE CHINE
 Size: 38 - 40 - 42 - 44 - 46

100,000

READY TO WEAR
PATTI
DUSTER COAT

Our iconic softly proportioned duster coat. A multiple - use garment which is perfect and elegant over a dress, practical, and colourful when combined with a sportier outfit. Unlined, it is sartorially made with internal stitching.



Model: 00982
Article: 2811
Style: 723S
Colour: 1 - Colour description: LIGHT BLUE
Composition: 100% SILK TWILL
Size: 40 - 42 - 44

110,000-



Model: 00982
Article: 2811
Style: 724S
Colour: 1 - Colour description: BLUE
Composition: 100% SILK TWILL
Size: 40 - 42 - 44

110,000-



Model: 01187
Article: 2811
Style: 725S
Colour: 1 - Colour description: YELLOW
Composition: 100% SILK TWILL
Size: 40 - 42 - 44

110,000-



Model: 01187
Article: 2811
Style: 726S
Colour: 1 - Colour description: BLACK
Composition: 100% SILK TWILL
Size: 40 - 42 - 44

110,000-

MANTERO | 1902

mantero.com

