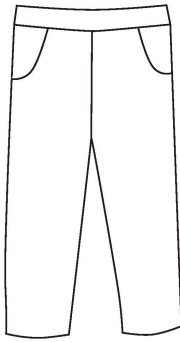


# Worker's Nobility 2021AW PriceList

**Vest:**  
100% wool 380 gr/m2  
100% cotton lining

**Color options:**  
100% wool: dark grey, black, ecru, camel, taupe.  
100% cotton: ecru, black

**Size:**  
One size **28,000-**

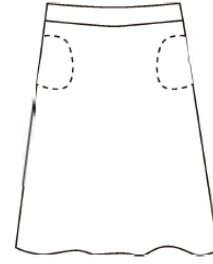


**Pants:**  
Elastic waistband  
100% wool 380 gr/m2  
100% cotton bias tape 180 gr/m2  
**Color options:**  
100% wool: dark grey, black, ecru, camel, taupe.

**Size:**  
One size **30,000-**

**Canvas jacket:**  
seam pockets / Round neck 100% cotton canvas 210 gr/m2 100% cotton lining

**Color options:**  
100% cotton canvas: black, bourdeaux, grey, black  
100% cotton: sand/white, black/white, bourdeaux/white, grey/white  
**Size:**  
S. M. L **33,000-**

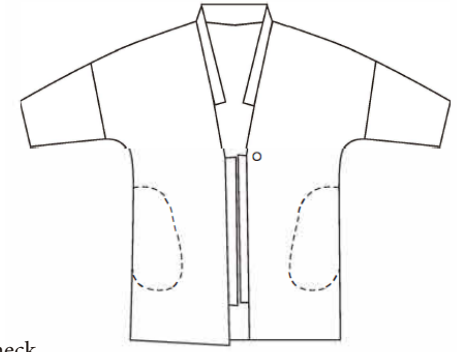


**Skirt:**  
Elastic waistband  
100% cotton  
**Color options:** black/white, camel/white, sand plaid  
**Size:**  
One size

**28,000-**

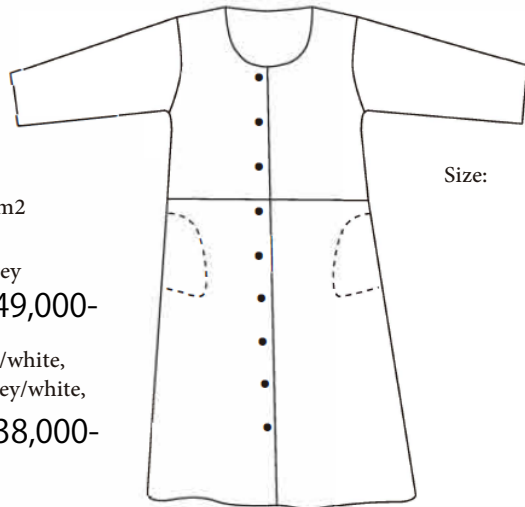
**Coat dos:**  
seam pockets / V neck  
100% wool 380 gr/m2  
100% cotton twill lining 180 gr/m2

**Color options:**  
100% wool: dark grey, black, ecru, camel, taupe.  
**Size:**  
One size **45,000-**



**Babe dress:**  
100% wool 150 gr/m2  
**Color options:**  
100% wool: dark grey **49,000-**

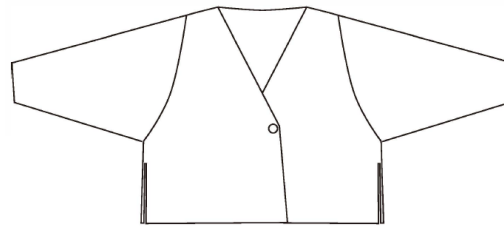
100% cotton: black/white, bordeaux/white, grey/white, green/white **38,000-**  
**Size:**  
One size



**Size:**

**Cardigan:**  
V neck  
100% wool 380 gr/m2  
100% cotton bias tape

**Color options:**  
100% wool: dark grey, black, ecru, camel, taupe.  
**Size:**  
One size



**33,000-**

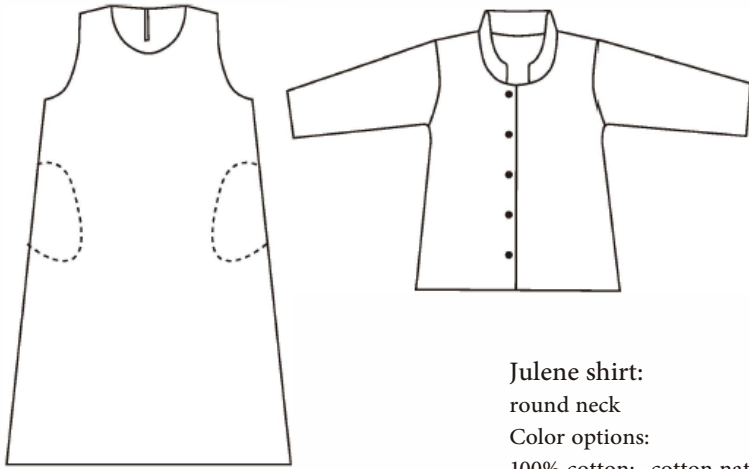


**Pocket coat:**  
two pockets / round neck  
100% wool 380 gr/m2 (outside) 100% cotton 240 gr/m2 (inside)

**Color options:**  
100% wool: dark grey, black, ecru  
**Size:**  
One size

**49,000-**

Worker's Nobility 2021AW PriceList

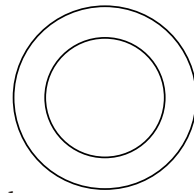


**Jone dress:**  
 round neck/ seam pockets 100%  
 wool 380 gr/m2  
 100% cotton bias tape

**Color options:**  
 100% wool: dark grey, black, ecru,  
 camel, taupe.

**Size:**  
 One size **36,000-**

**Julene shirt:**  
 round neck  
 Color options:  
 100% cotton: cotton nature  
 Size:  
 S, M, L, XL **23,000-**



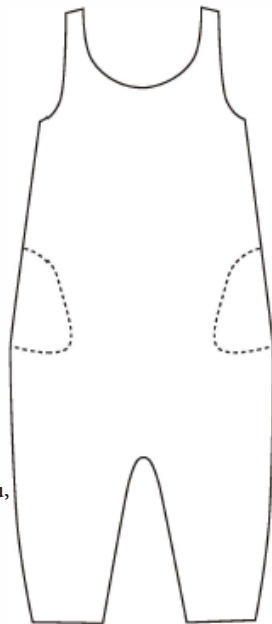
**Txapela:**  
 100% wool: ecru, camel, taupe,  
 dark grey, black.

**Size:**  
 One size **7,500-**

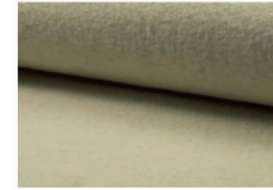
**Overall:**  
 two pockets

**Color options:**  
 100% wool: dark grey, black, ecru,  
 camel, taupe.

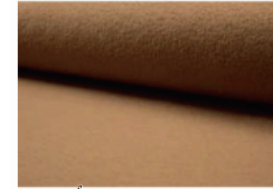
**Size:**  
 One size **36,000-**



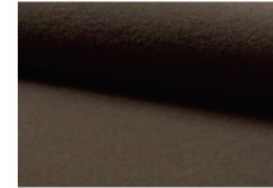
WOOL



ecru



camel



taupe



dark grey

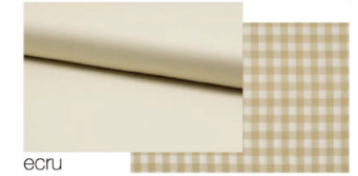


black

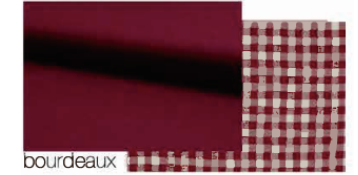


dark grey

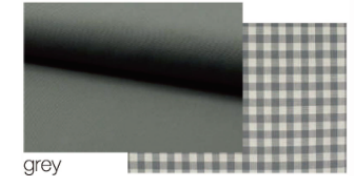
COTTON



ecru



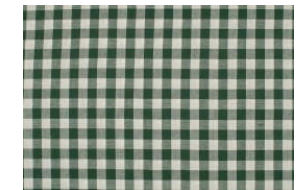
bourdeaux



grey



black



green/white



cotton nature